

TECHNICAL SPECIFICATIONS

7-axis robots

Last revised: 06/2021

| General specifications | KR810 | KR1018 | KR1205 | KR1410 | KR1805 |
|-----------------------------|---|-----------|-----------|-----------|-----------|
| Reach (mm) | 850 | 1000 | 1200 | 1400 | 1800 |
| Payload (kg) | 10 | 18 | 5 | 10 | 5 |
| Weight (kg) | 24 | 34 | 25 | 35 | 38 |
| Joint speed (deg/s) | 225 | 163/225 | 225 | 163/225 | 163/225 |
| Joint ranges (deg) | J2 and J4: -70°/+180°; J1, J3, J5, J6 and J7: ±360° | | | | |
| Brakes on joints | Yes | Yes | Yes | Yes | Yes |
| Absolute encoders on joints | Yes | Yes | Yes | Yes | Yes |
| Repeatability (mm) | +/- 0.1 | +/- 0.1 | +/- 0.1 | +/- 0.1 | +/- 0.1 |
| Degrees of freedom | 7 | 7 | 7 | 7 | 7 |
| Footprint (mm) | 130 × 130 | 160 × 160 | 130 × 130 | 160 × 160 | 160 × 160 |
| Operating temperature (C°) | 0–45 | 0–45 | 0–45 | 0–45 | 0–45 |
| Body material | Anodized aluminum | | | | |
| Protection rating | IP54 | IP54 | IP54 | IP54 | IP54 |

| Controller | KR810 | KR1018 | KR1205 | KR1410 | KR1805 |
|----------------------------|-------|--------|--------|--------|--------|
| Digital outputs 24V (pcs) | 8 | 8 | 8 | 8 | 8 |
| Relay outputs (pcs) | 4 | 4 | 4 | 4 | 4 |
| Digital inputs 3–30V (pcs) | 16 | 16 | 16 | 16 | 16 |
| Analogue I/O 0–10V (pcs) | 2/2 | 2/2 | 2/2 | 2/2 | 2/2 |
| Analogue I/O 4–20mA (pcs) | 2/2 | 2/2 | 2/2 | 2/2 | 2/2 |

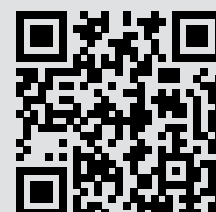
| Power | KR810 | KR1018 | KR1205 | KR1410 | KR1805 |
|---------------------------------------|--------------------|--------------------|--------------------|--------------------|--------------------|
| Power consumption (with max. load; W) | 400–600 | 400–1200 | 400–600 | 400–1200 | 400–1200 |
| Supply voltage (VAC) | 100–120 or 200–240 | 100–120 or 200–240 | 100–120 or 200–240 | 100–120 or 200–240 | 100–120 or 200–240 |
| Supply current (A) | 16 | 16 | 16 | 16 | 16 |
| Supply frequency (Hz) | 50/60 | 50/60 | 50/60 | 50/60 | 50/60 |
| Max speed (mm/s) | 1200/1800 | 2000/2400 | 1200/1800 | 2000/2400 | 2000/2400 |
| Sound level (dB) | <65 | <65 | <65 | <65 | <65 |

Data Sheet (Technical Specifications) - EN - 06-2021. No responsibility is taken for the correctness of the information in this brochure.



Kassow Robots: Product Family

| | Reach/Payload |
|---------------|---------------|
| KR810 | 850 mm/10 kg |
| KR1018 | 1000 mm/18 kg |
| KR1205 | 1200 mm/5 kg |
| KR1410 | 1400 mm/10 kg |
| KR1805 | 1800 mm/5 kg |



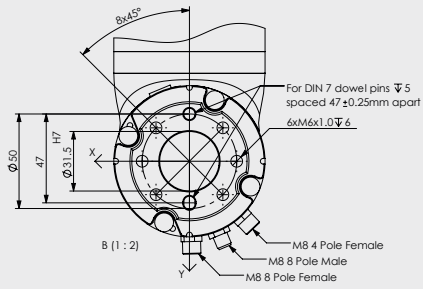
Contact

Kassow Robots
Oliefabriksvej 57
2770 Kastrup, Copenhagen
Denmark
+45 20 24 09 95
sales@kassowrobots.com
www.kassowrobots.com

Robot frames, kinematics and mechanical interfaces

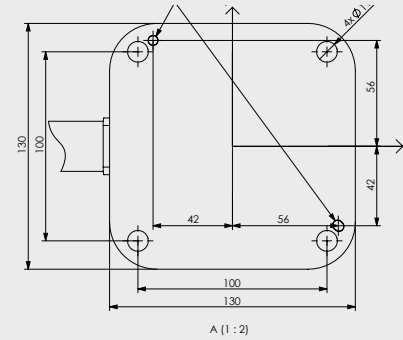
All cobots

Tool head with connections



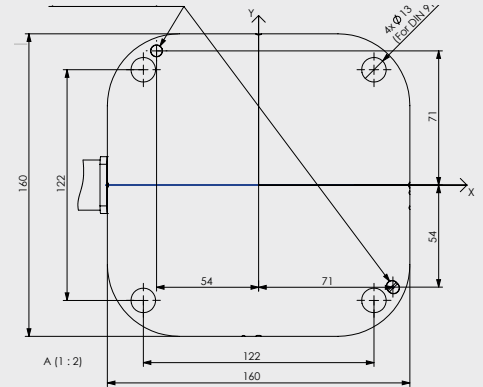
KR810, KR1205

Based plate dimensions



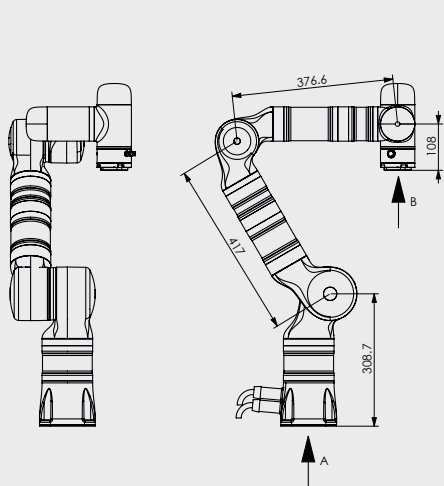
KR1018, KR1410, KR1805

Based plate dimensions



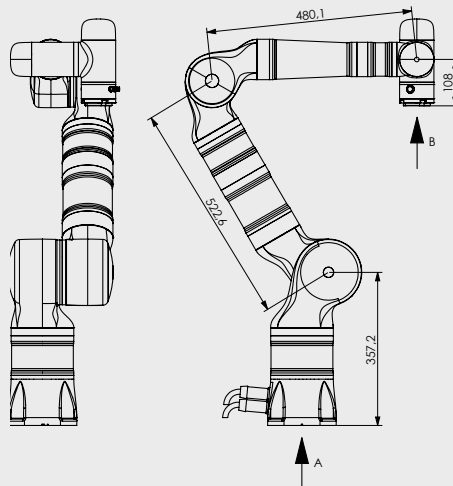
KR810

Dimensions



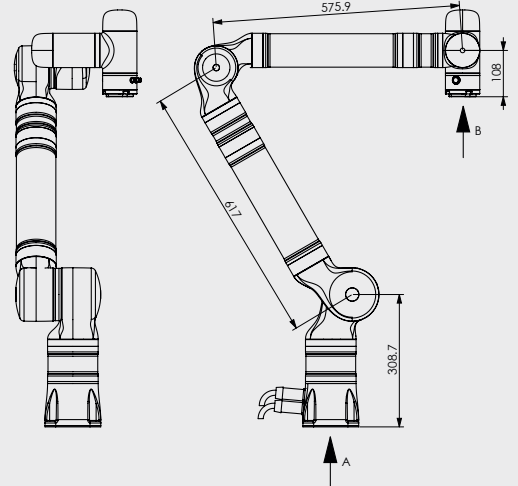
KR1018

Dimensions



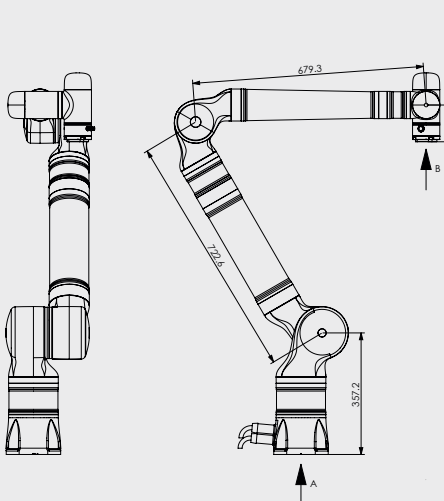
KR1205

Dimensions



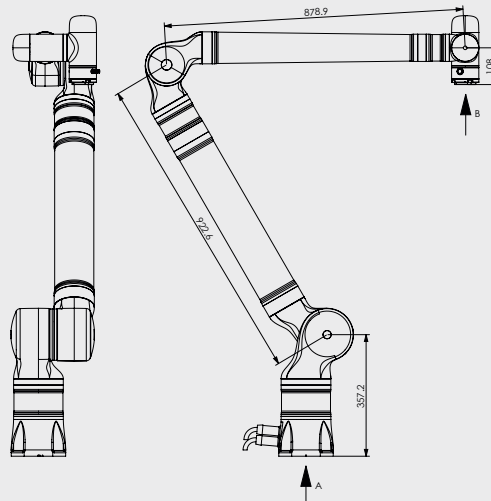
KR1410

Dimensions



KR1805

Dimensions



7-axis cobot family

| | |
|---------------|---------------|
| KR810 | 850 mm/10 kg |
| KR1018 | 1000 mm/18 kg |
| KR1205 | 1200 mm/5 kg |
| KR1410 | 1400 mm/10 kg |
| KR1805 | 1800 mm/5 kg |

Kassow Robots
Oliefabriksvej 57
2770 Kastrup, Copenhagen
Denmark
+45 20 24 09 95
sales@kassowrobots.com
www.kassowrobots.com