

High-precision slides PS

PS 16 - PS 32

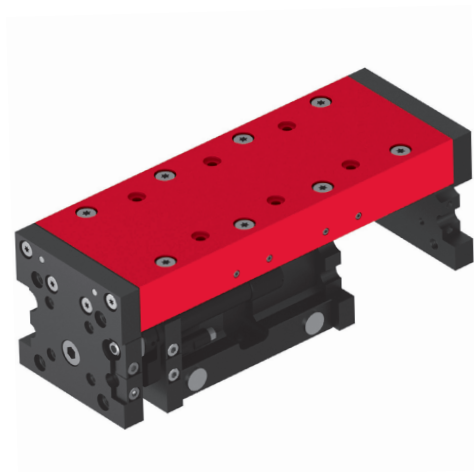
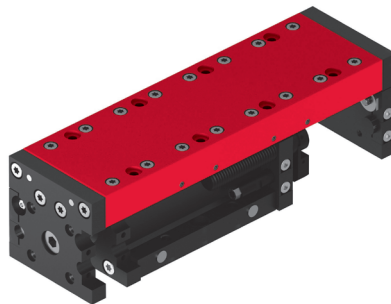
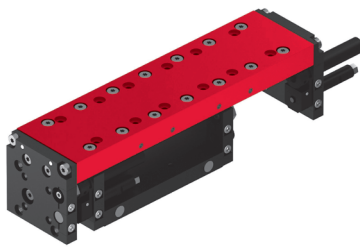
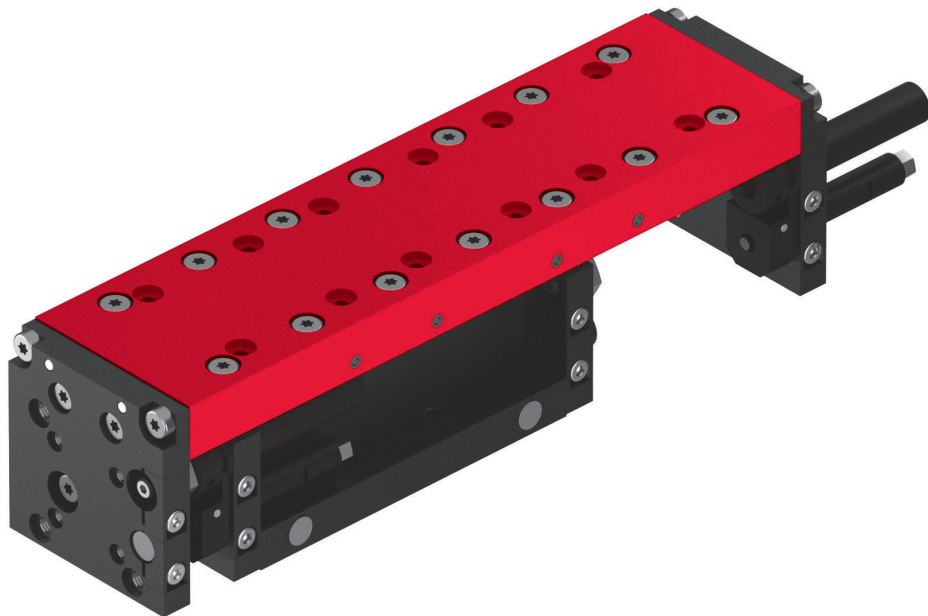


Table of contents: PS

High-precision slides PS		Page
PS 16		52
PS 25		58
PS 32		64
Accessories PS		69

High-precision slides PS

PS 16

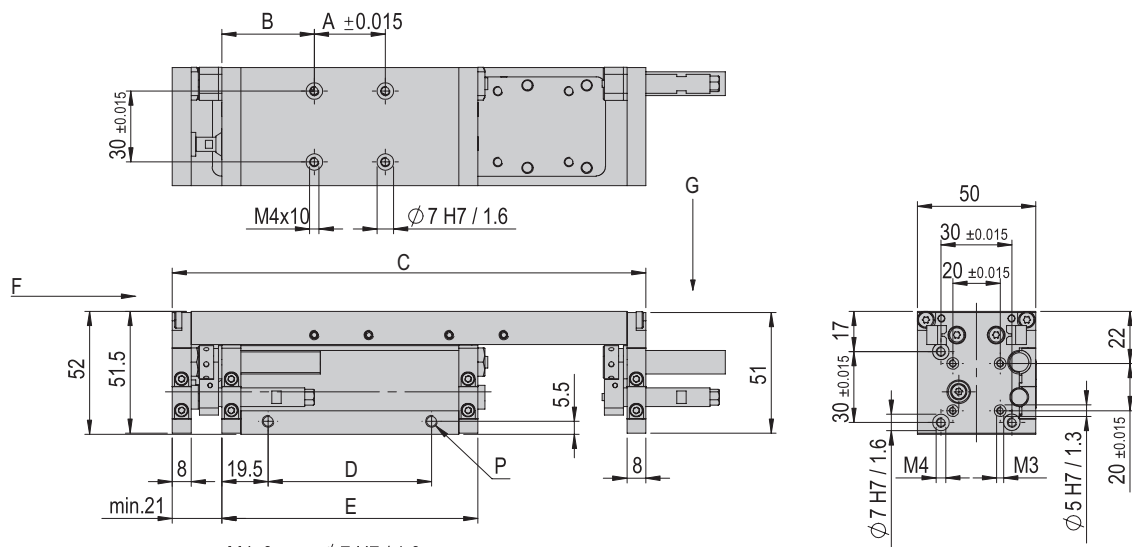


- For large loads
- Cross-roller guides
- Long strokes
- Intermediate stop for 3rd Position
- Portal construction possible

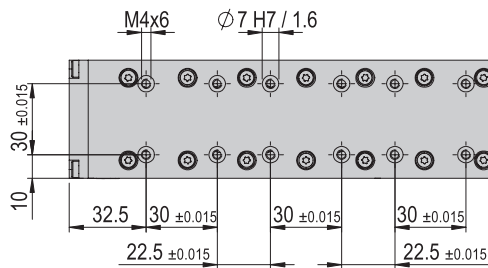
Dimensions and dimension drawings

PS 16

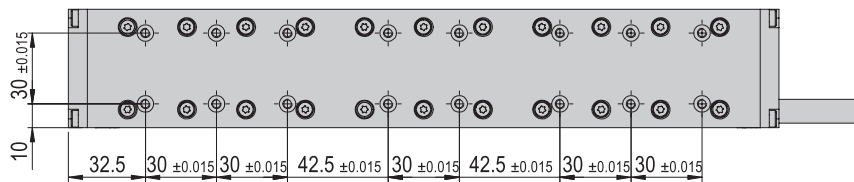
Type	PS 16/50	PS 16/100	PS 16/150
A	1 x 30 mm	3 x 30 mm	5 x 30 mm
B	39 mm	34 mm	29 mm
C	200 mm	300 mm	400 mm
D	69 mm	119 mm	169 mm
E	108 mm	158 mm	208 mm
F	Front	Front	Front
G	Top slide	Top slide	Top slide
P	M5	M5	M5



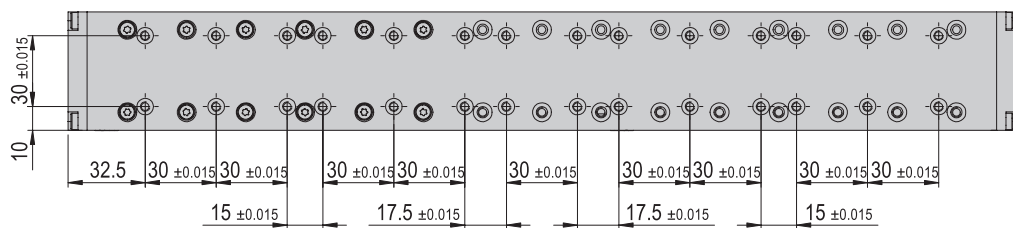
PS16/50

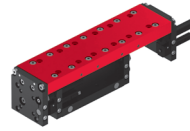


PS16/100



PS 16/150





PS 16	
Attachment grid	30 x 30 mm
Attachment grid alternative	20 x 20 mm
Attachment thread	M4
Attachment thread alternative	M3
Operating pressure	6 +/- 2 bar
Air connection P	M5
Cylinder Ø	16 mm
Retract piston force	104 N
Extend piston force	121 N
Operating temperature	0 - 50 °C
Storage temperature	0 - 50 °C
Humidity	< 90 %
Medium filtered compressed air	10 - 40 µm

Type	PS 16/50	PS 16/100	PS 16/150
Order number	50076867	50076873	50076874
Stroke H	50 mm	100 mm	150 mm
Stroke limitation	2 x 25 mm	2 x 25 mm	2 x 25 mm
Net weight	1.407 kg	1.85 kg	2.282 kg
Moving weight	0.75 kg	0.97 kg	1.18 kg
Air consumption/cycle	0.0859 NL	0.1719 NL	0.2578 NL
Noise level	60 dB (A)	60 dB (A)	60 dB (A)
Repeat accuracy	+/- 0.01 mm	+/- 0.01 mm	+/- 0.01 mm
Maximum speed	0.2 m/s	0.3 m/s	0.4 m/s
Minimum speed	0.05 m/s	0.05 m/s	0.05 m/s
Mounting position	↕	↕	↕

The technical data refers to a nominal pressure of 6 bar under Afag standard test conditions. The maximum payloads are listed in the payloads table in the slide loads section. The module can be operated with lubricated or dry air. Cleanroom class ISO 14644-1, class ISO 7

Included in the delivery

(Catalogue HT accessories)

- 2x Centering bushing Ø5x2.5
- 2x Centering bushing Ø7x3
- 2x Shock absorber ASSD M10x1 -1
- 2x Stop screw AS 08/14

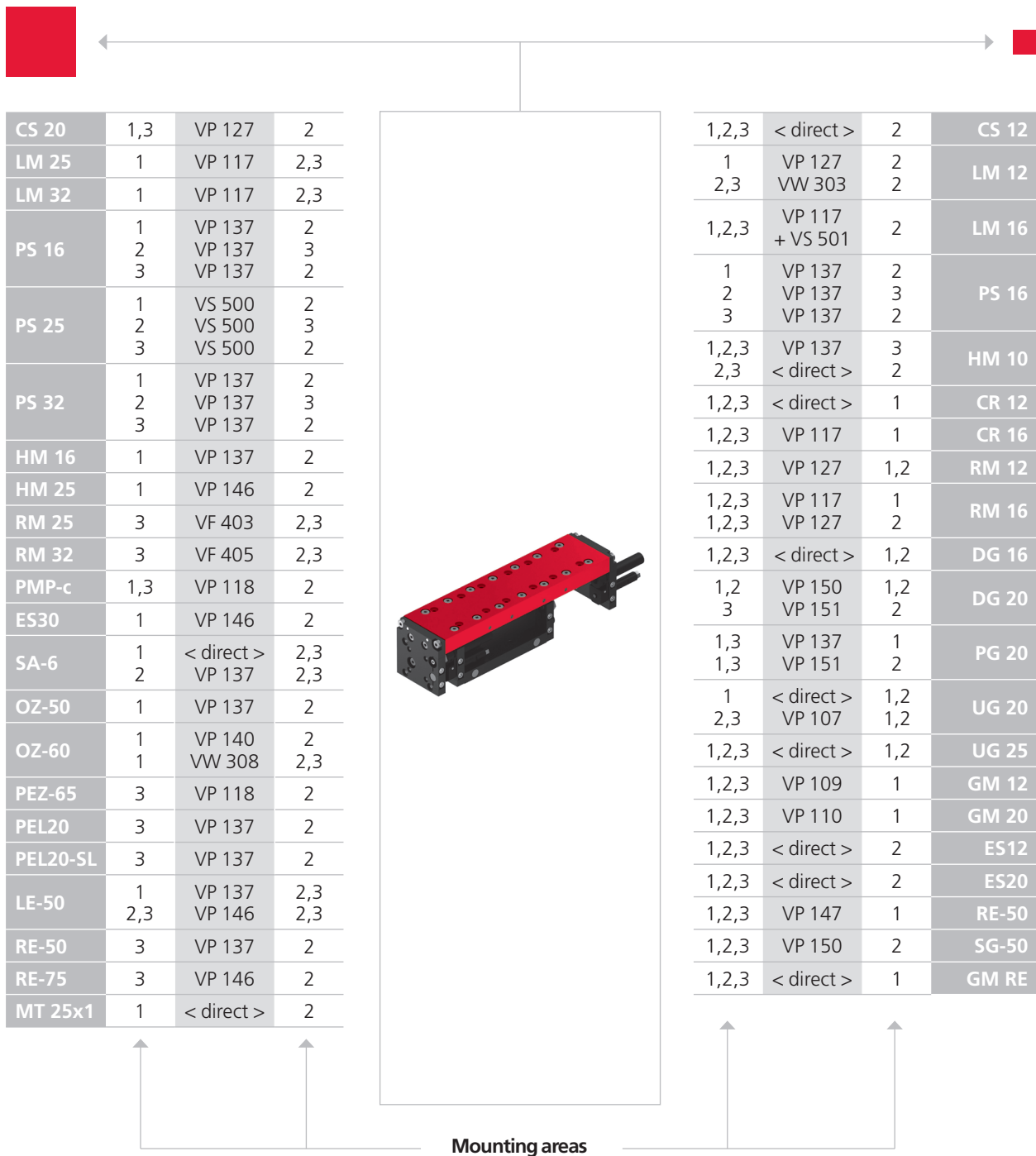
Accessories

- Intermediate stop ZA-PS 16 [p. 69]
- Stop extension [p. 72]
- Shock absorber ASSD M10x1 -1 [p. 72]
- Proximity switch holder PS 16 [p. 73]

(Catalogue HT accessories)

- INI d4/6.5x45-Sn1.0-PNP-NO-M8x1
- INI d4x25-Sn1.0-PNP-NO-M8x1

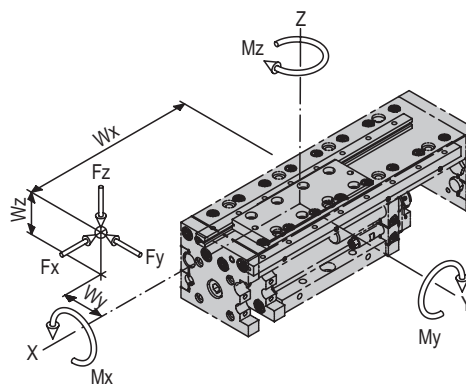
Warranty: 24 months following commissioning, but a maximum of 27 months following delivery



CS, ES 	PS 	LM, LE 	HM 	SA 	OZ
PMP, PMP-c 	PEZ, PDZ 	PEL, PDL 	CR, RM 32, RE, SREH 	RM, RE 	UG, GM, SG, DG, PG, GE

Note that there might be different mounting positions from one module to another one.
The required connection elements and the range of pedestals are depicted in the catalogue HT accessories.

Type	PS 16/50	PS 16/100	PS 16/150
Max. static torque Mx	23 Nm	34.6 Nm	42.4 Nm
Max. static torque My	38.5 Nm	54.6 Nm	70.7 Nm
Max. static torque Mz	20.8 Nm	28.4 Nm	36.2 Nm
Max. dynamic torque Mx	8.9 Nm	13.3 Nm	16.3 Nm
Max. dynamic torque My	14.8 Nm	21.0 Nm	27.2 Nm
Max. dynamic torque Mz	8.0 Nm	10.9 Nm	13.9 Nm
Effective distance Wx	75 mm	100 mm	125 mm
Effective distance Wz	10 mm	10 mm	10 mm



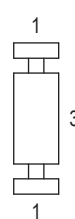
Maximum payload/type	PS 16/50	PS 16/100	PS 16/150
Installation position (horizontal) for mounting side 1	3.5 kg	3 kg	2.5 kg
Installation position (horizontal) for mounting side 3	8 kg	7.5 kg	7 kg
Installation position (vertical) for mounting side 1	3.5 kg	3 kg	2.5 kg
Installation position (vertical) for mounting side 3	8 kg	7.5 kg	7 kg

Assembly sides
module mounting

horizontal:

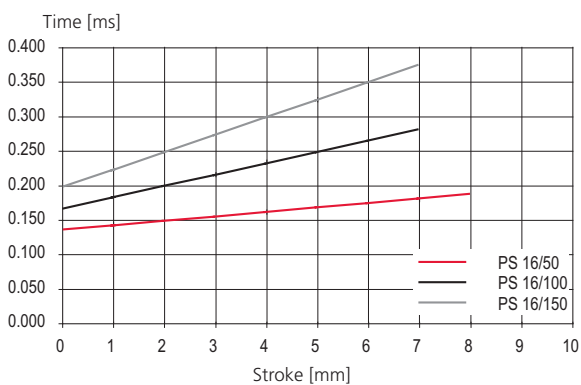


vertical:



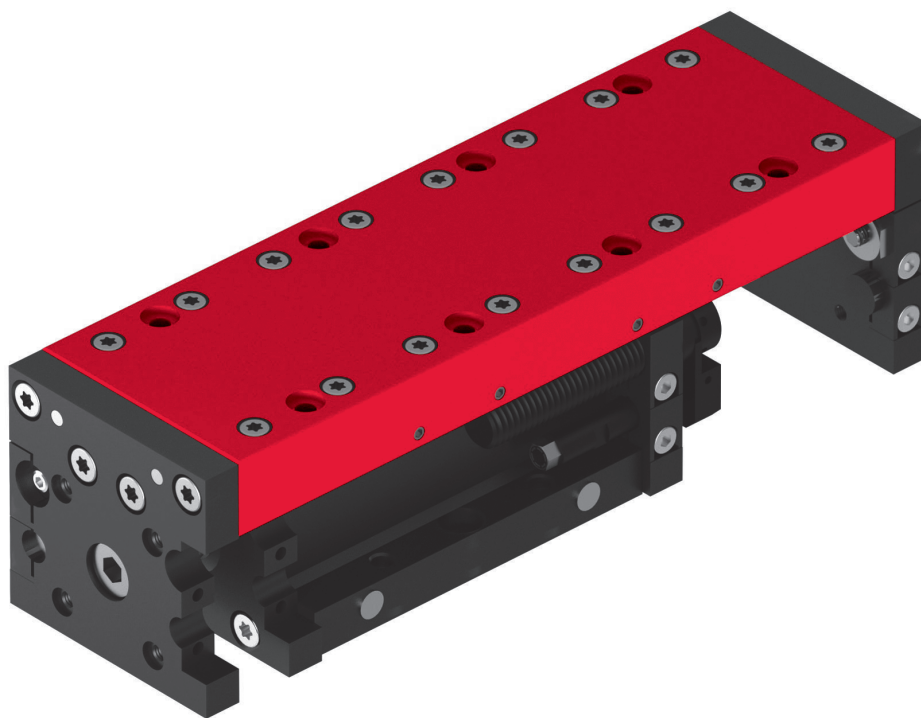
Operation time diagrams

Operation time PS 16



High-precision slides PS

PS 25

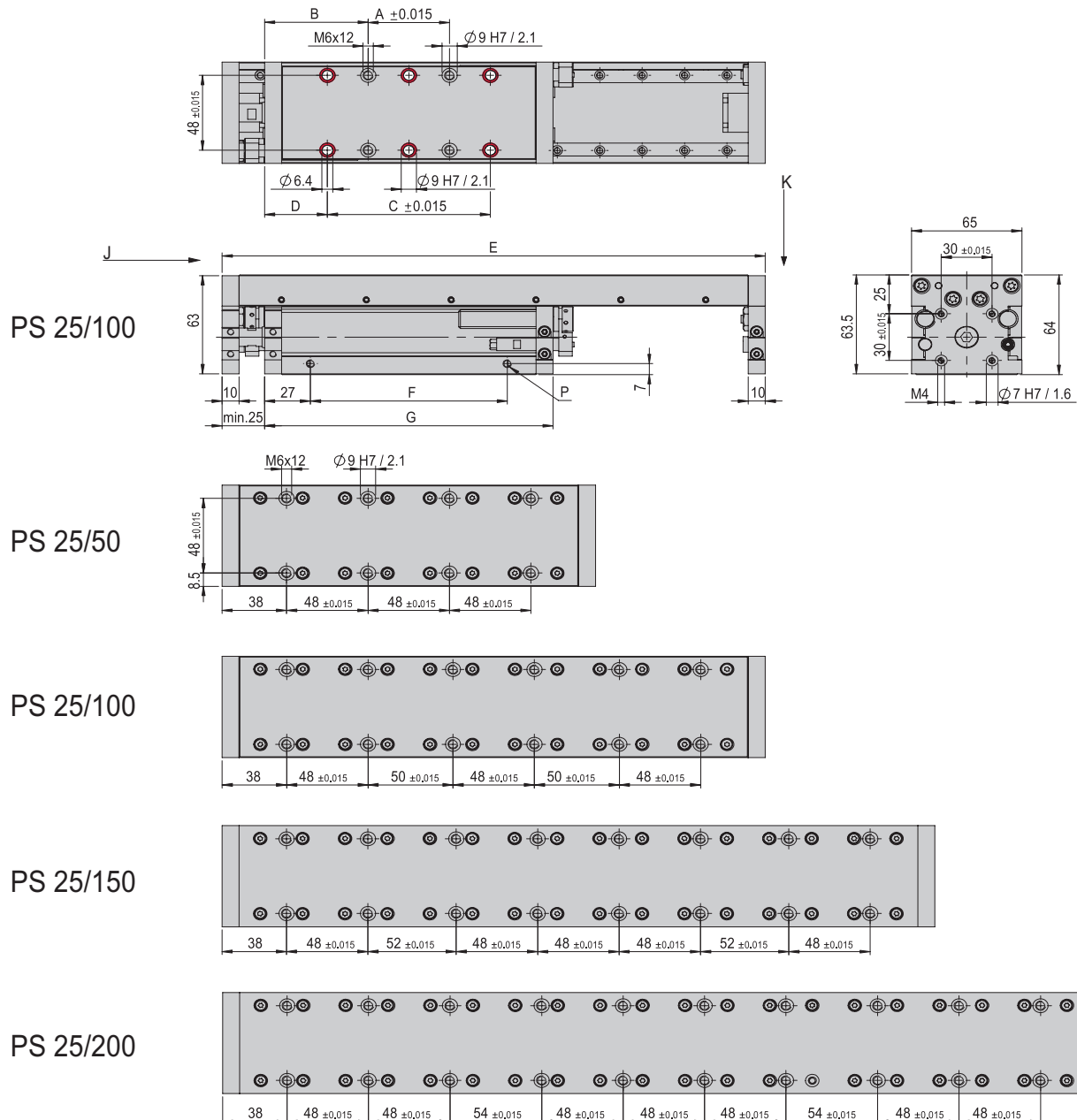


- For large loads
- Cross-roller guides
- Long strokes
- Intermediate stop for 3rd Position
- Portal construction possible

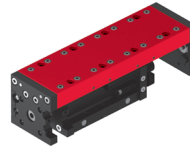
Dimensions and dimension drawings

PS 25

Type	PS 25/50	PS 25/100	PS 25/150	PS 25/200
A	1 x 48 mm	1 x 48 mm	3 x 48 mm	3 x 48 mm
B	36 mm	61 mm	38 mm	63 mm
C		2 x 48 mm	2 x 48 mm	4 x 48 mm
D	60 mm	37 mm	62 mm	39 mm
E	220 mm	320 mm	420 mm	520 mm
F	66 mm	116 mm	166 mm	216 mm
G	120 mm	170 mm	220 mm	270 mm
J	Front	Front	Front	Front
K	Top slide	Top slide	Top slide	Top slide
P	M5	M5	M5	M5



Bores can be screwed through



PS 25	
Attachment grid	48 x 48 mm
Attachment grid alternative	30 x 30 mm
Attachment thread	M6
Attachment thread alternative	M4
Operating pressure	6 +/- 2 bar
Air connection P	M5
Cylinder Ø	25 mm
Retract piston force	227 N
Extend piston force	295 N
Operating temperature	0 - 50 °C
Storage temperature	0 - 50 °C
Humidity	< 90 %
Medium filtered compressed air	10 - 40 µm

Type	PS 25/50	PS 25/100	PS 25/150	PS 25/200
Order number	50076883	50076888	50076891	50076893
Stroke H	50 mm	100 mm	150 mm	200 mm
Stroke limitation	2 x 25 mm	2 x 25 mm	2 x 25 mm	2 x 25 mm
Net weight	3.086 kg	3.086 kg	3.72 kg	4.35 kg
Moving weight	1.32 kg	1.68 kg	2.05 kg	2.41 kg
Air consumption/cycle	0.2 NL	0.4 NL	0.6 NL	0.8 NL
Noise level	60 dB (A)	60 dB (A)	60 dB (A)	60 dB (A)
Repeat accuracy	+/- 0.01 mm	+/- 0.01 mm	+/- 0.01 mm	+/- 0.01 mm
Maximum speed	0.2 m/s	0.3 m/s	0.4 m/s	0.4 m/s
Minimum speed	0.05 m/s	0.05 m/s	0.05 m/s	0.05 m/s
Mounting position	↕	↕	↕	↕

The technical data refers to a nominal pressure of 6 bar under Afag standard test conditions. The maximum payloads are listed in the payloads table in the slide loads section. The module can be operated with lubricated or dry air. Cleanroom class ISO 14644-1, class ISO 7

Included in the delivery (Catalogue HT accessories)

- 2x Centering bushing Ø7x3
- 2x Centering bushing Ø9x4
- 4x Mounting screw M6x14
- 4x Mounting screw M6x16
- 2x Stop screw AS 08/16
- 2x Shock absorber ASSD M12x1 -1

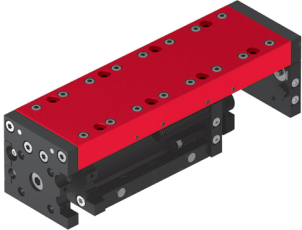
Accessories

- Intermediate stop ZA-PS 25 [p. 70]
 - Stop extension PS 25 [p. 72]
 - Shock absorber ASSD M12x1 -1 [p. 72]
 - Proximity switch holder PS 25 [p. 73]
- (Catalogue HT accessories)
- INI d4/6.5x45-Sn1.0-PNP-NO-M8x1
 - INI d4x25-Sn1.0-PNP-NO-M8x1

Warranty: 24 months following commissioning, but a maximum of 27 months following delivery

←
→

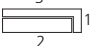
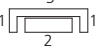
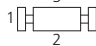
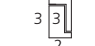
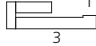

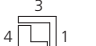
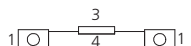
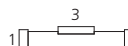
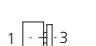
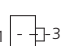
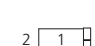
LM 32	1	< direct >	2,3
PS 25	1	VP 117	2
	2	< direct >	3
	3	< direct >	2
PS 32	1	< direct >	2
	2	< direct >	3
	3	< direct >	2
HM 25	1	< direct >	2
RM 32	3	VF410	2
	3F	< direct >	2
RM 63	3	VF 407	2,3
PMP	1,3	VP 119	3
	1,3	< direct >	2
ES30	1	< direct >	2
OZ-50	1	< direct >	2
OZ-60	1	< direct >	2
PEZ-80	3	VP 118	2
PDZ-128	3	< direct >	2
PEL20	3	direct	2
PDL30	3	direct	2
PDL40	3	direct	2
LE-60	1,2,3	< direct >	2
	1,2,3	VP 146	3
RE-75	3	< direct >	2
MH 45x1	1*	< direct >	2
MT 45x1	1	< direct >	2
MT 45x2b	1	< direct >	2,3
MTZ 45x2	1	< direct >	2,3



1	< direct >	2	CS 16
3	VP 115	2	
1	VP 112+VS 501	2	LM 16
2,3	VS 501		
1	VP 112	2	LM 20
2	< direct >	2	
3	VP 118	2	
1	VP 112+VS501	2	LM 25
2	< direct >	2	
3	VP 118	2	
1	VS 500	2	PS 16
2	VS 500	3	
3	VS 500	2	
1	VP 117	2	PS 25
2	< direct >	3	
3	< direct >	2	
1	VP 137	3	HM 10
2,3	VP 112	2	
2,3	VP 127	3	
1	VP 127	3	HM 16
2	< direct >	3	
2,3	< direct >	2	
3	VP 146	3	
1	VP 117	1	CR 16
2,3	< direct >	1	
1	VP 117	1	CR 20
2,3	< direct >	2	
1	VP 120	1,2	RM 12
2	< direct >	2	
2,3	< direct >	1	
3	VP 122	2	
1	VP 120	1,2	RM 16
2,3	< direct >	1	
2	< direct >	2	
3	VW 302	2	
1	VP 120+VS500	1	RM 25
1	VP 120+VS500	2	
2	< direct >	1,2	
3	< direct >	1	
3	VP 118	2	
1	VP 107	1,2	UG 20
2,3	VP 115	1,2	
1	< direct >	1,2	UG 25
2,3	VP 115	1,2	
1	VP 110	1	GM 20
2,3	VP 129	1	
1	VP 117	1	GM 32
2,3	< direct >	1	
1	VP 118	2	ES30
2,3	< direct >	2	
2	VP 117	3	SA-3
3	VP 113	3	
1	VP 147	1	RE-50
2,3	VP 127	1	
1	VP 146	1	RE-75
2	< direct >	1	
3	VP 148	1	
1	< direct >	1	GM RE
2,3	VP 112	1	
1,2,3	VP 150	2	SG-50

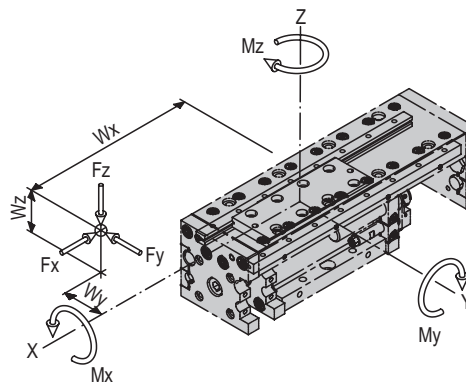
* 2x MH 45x1, portal F flange

Mounting areas

CS, ES	PS	LM, LE	HM	SA	OZ
					
PMP, PMP-c	PEZ, PDZ	PEL, PDL	CR, RM 32, RE, SREH	RM, RE	UG, GM, SG, DG, PG, GE
					

Note that there might be different mounting positions from one module to another one.

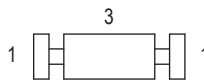
Type	PS 25/50	PS 25/100	PS 25/150	PS 25/200
Max. static torque Mx	60.7 Nm	87.7 Nm	105.2 Nm	131.6 Nm
Max. static torque My	65.9 Nm	89.6 Nm	113.2 Nm	136.8 Nm
Max. static torque Mz	37.4 Nm	48.0 Nm	58.9 Nm	69.3 Nm
Max. dynamic torque Mx	23.3 Nm	33.7 Nm	40.5 Nm	50.6 Nm
Max. dynamic torque My	25.3 Nm	34.5 Nm <td 43.5 Nm	52.6 Nm	
Max. dynamic torque Mz	14.4 Nm	18.5 Nm	22.7 Nm	26.7 Nm
Effective distance Wx	85 mm	110 mm	135 mm	160 mm
Effective distance Wz	16 mm	16 mm	16 mm	16 mm



Maximum payload/type	PS 25/50	PS 25/100	PS 25/150	PS 25/200
Installation position (horizontal) for mounting side 1	6 kg	5.5 kg	5 kg	5 kg
Installation position (horizontal) for mounting side 3	12 kg	11 kg	10 kg	10 kg
Installation position (vertical) for mounting side 1	6 kg	5.5 kg	5 kg	5 kg
Installation position (vertical) for mounting side 3	12 kg	11 kg	10 kg	10 kg

Assembly sides
module mounting

horizontal:

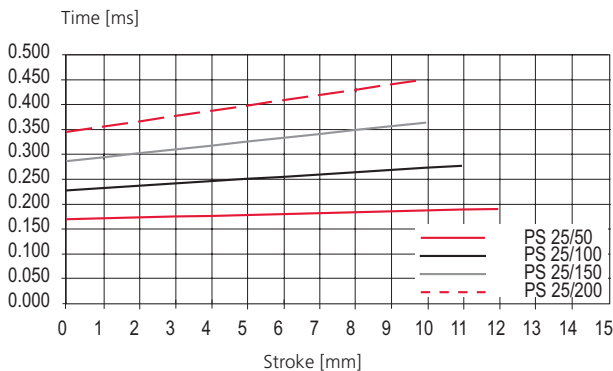


vertical:



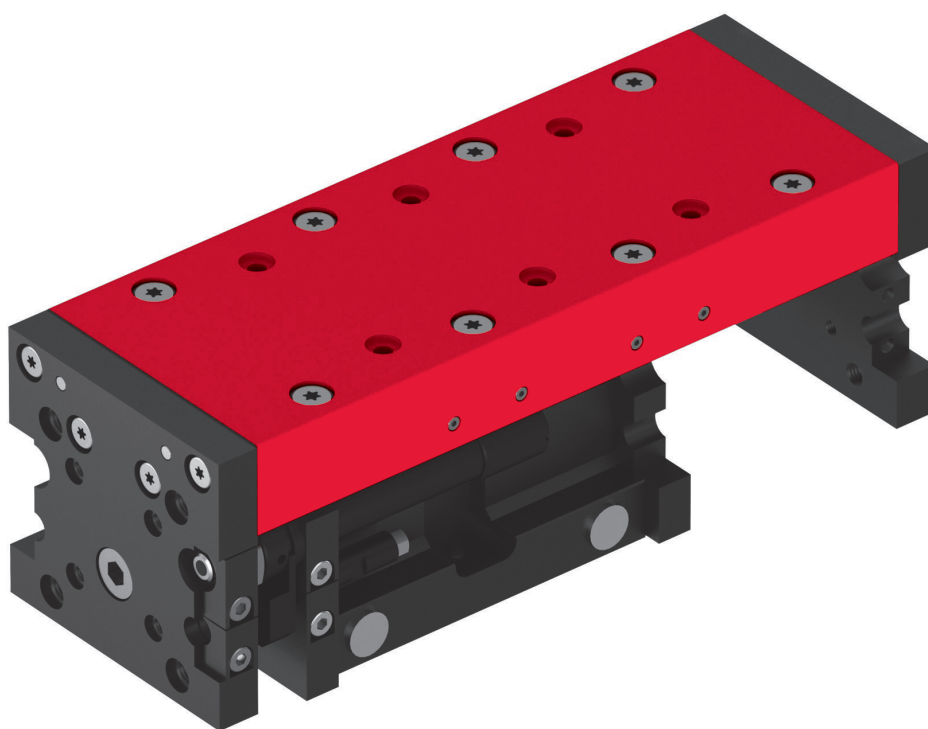
Operation time diagrams

Operation time PS 25



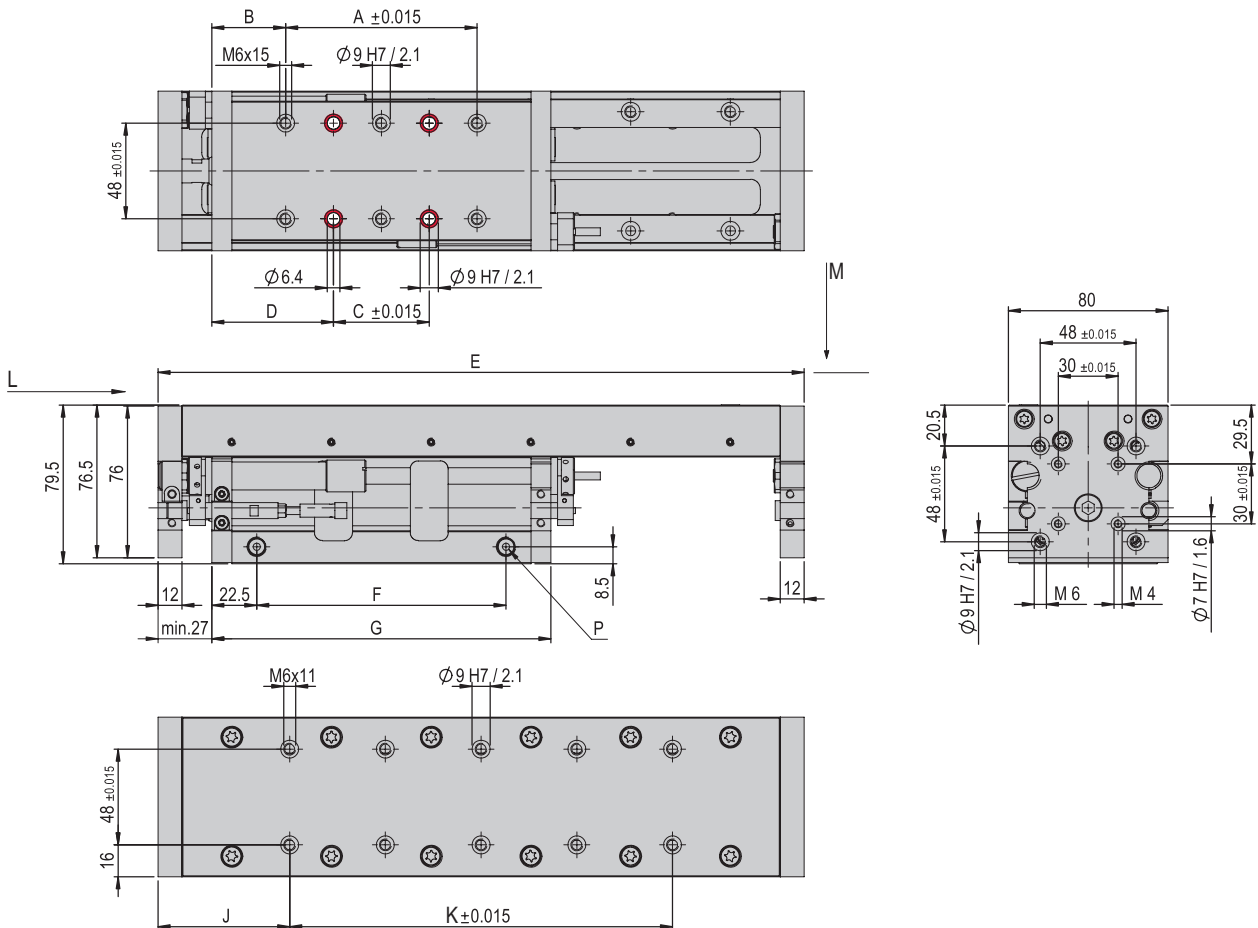
High-precision slides PS


PS 32

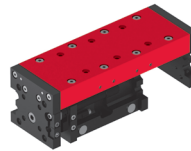


- For large loads
- Cross-roller guides
- Long strokes
- Intermediate stop for 3rd Position
- Portal construction possible

Type	PS 32/50	PS 32/100	PS 32/150	PS 32/200	PS 32/250
A	1 x 48 mm	2 x 48 mm	2 x 48 mm	4 x 48 mm	4 x 48 mm
B	36 mm	37 mm	62 mm	39 mm	64 mm
C		1 x 48 mm	3 x 48 mm	3 x 48 mm	5 x 48 mm
D	60 mm	61 mm	38 mm	63 mm	40 mm
E	224 mm	324 mm	424 mm	524 mm	624 mm
F	75 mm	125 mm	175 mm	225 mm	275 mm
G	120 mm	170 mm	220 mm	270 mm	320 mm
J	64 mm	66 mm	68 mm	70 mm	72 mm
K	2 x 48 mm	4 x 48 mm	6 x 48 mm	8 x 48 mm	10 x 48 mm
L	Front	Front	Front	Front	Front
M	Top slide	Top slide	Top slide	Top slide	Top slide
P	G1/8 "	G1/8 "	G1/8 "	G1/8 "	G1/8 "



 Bores can be screwed through



PS 32	
Attachment grid	48 x 48 mm
Attachment grid alternative	30 x 30 mm
Attachment thread	M6
Attachment thread alternative	M4
Operating pressure	6 +/- 2 bar
Air connection P	G 1/8 "
Cylinder Ø	32 mm
Retract piston force	415 N
Extend piston force	483 N
Operating temperature	0 - 50 °C
Storage temperature	0 - 50 °C
Humidity	< 90 %
Medium filtered compressed air	10 - 40 µm

Type	PS 32/50	PS 32/100	PS 32/150	PS 32/200	PS 32/250
Order number	50076902	50076905	50076907	50076909	50076911
Stroke H	50 mm	100 mm	150 mm	200 mm	250 mm
Stroke limitation	2 x 25 mm	2 x 25 mm	2 x 25 mm	2 x 25 mm	2 x 25 mm
Net weight	4.21 kg	5.24 kg	6.29 kg	7.37 kg	8.4 kg
Moving weight	2.32 kg	2.96 kg	3.59 kg	4.23 kg	4.86 kg
Air consumption/cycle	0.34 NL	0.69 NL	1.03 NL	1.38 NL	1.72 NL
Noise level	60 dB (A)	60 dB (A)	60 dB (A)	60 dB (A)	60 dB (A)
Repeat accuracy	+/- 0.01 mm	+/- 0.01 mm	+/- 0.01 mm	+/- 0.01 mm	+/- 0.01 mm
Maximum speed	0.2 m/s	0.3 m/s	0.3 m/s	0.3 m/s	0.4 m/s
Minimum speed	0.05 m/s	0.05 m/s	0.05 m/s	0.05 m/s	0.05 m/s
Mounting position	↕	↕	↕	↕	↕

The technical data refers to a nominal pressure of 6 bar under Afag standard test conditions. The maximum payloads are listed in the payloads table in the slide loads section. The module can be operated with lubricated or dry air. Cleanroom class ISO 14644-1, class ISO 7

Included in the delivery

(Catalogue HT accessories)

- 2x Centering bushing Ø7x3
- 2x Centering bushing Ø9x4
- 4x Mounting screw M6x20
- 2x Shock absorber ASSD M14x1 -1
- 2x Stop screw AS 08/18

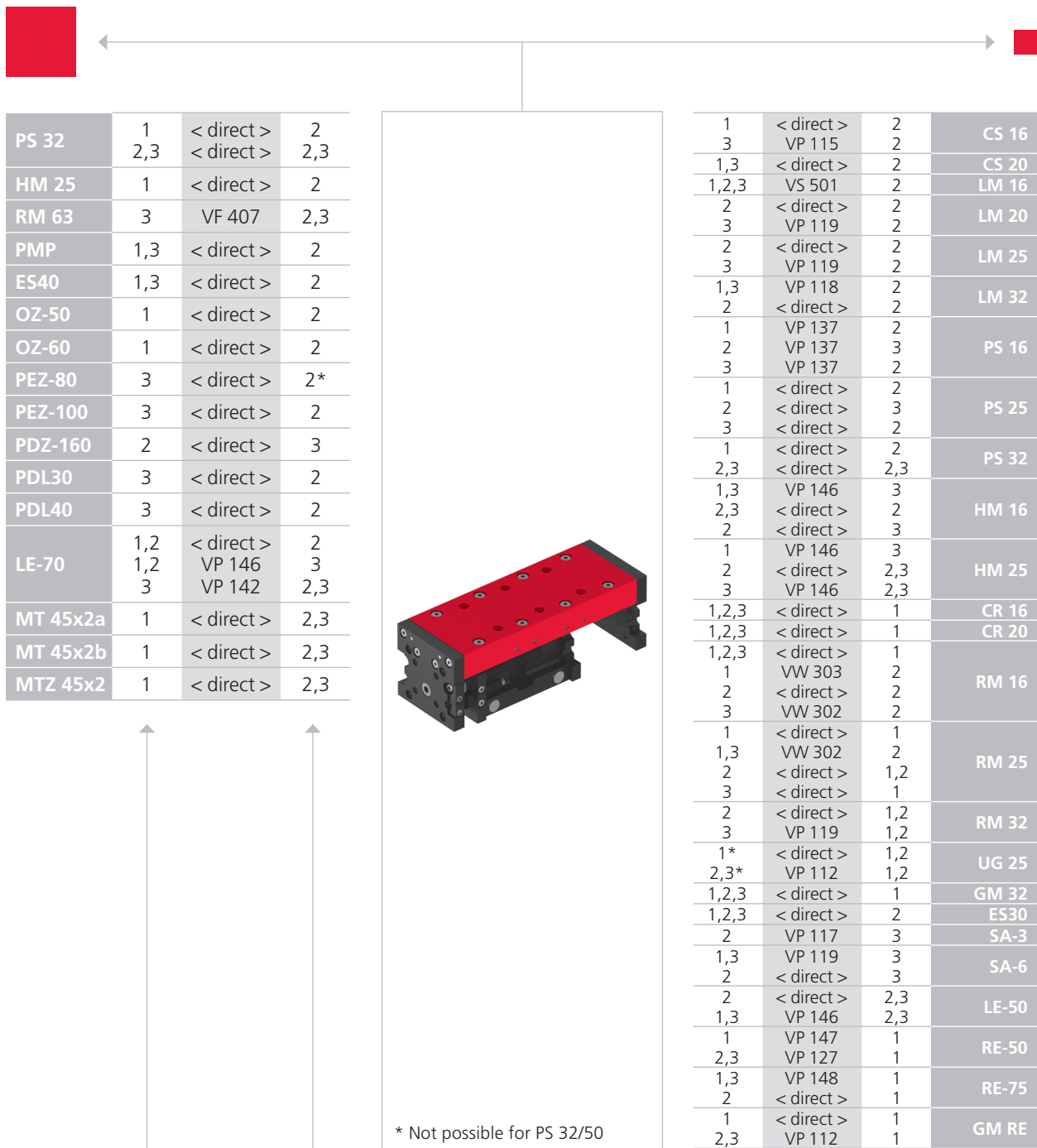
Accessories

- Intermediate stop ZA-PS 32 [p. 71]
- Stop extension PS 32 [p. 72]
- Shock absorber ASSD M14x1 -1 [p. 72]
- Proximity switch holder PS 32 [p. 73]

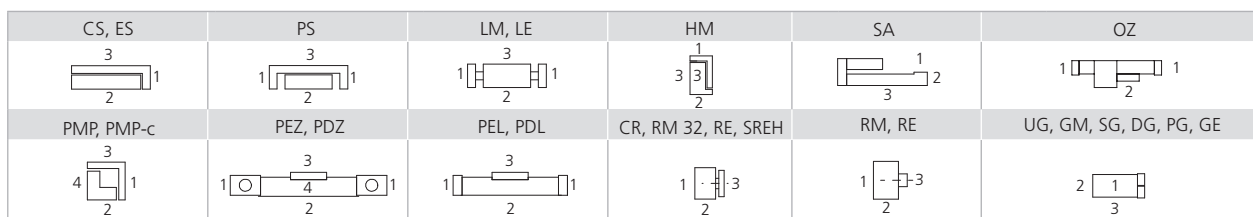
(Catalogue HT accessories)

- INI d4/6.5x45-Sn1.0-PNP-NO-M8x1
- INI d4x25-Sn1.0-PNP-NO-M8x1

Warranty: 24 months following commissioning, but a maximum of 27 months following delivery

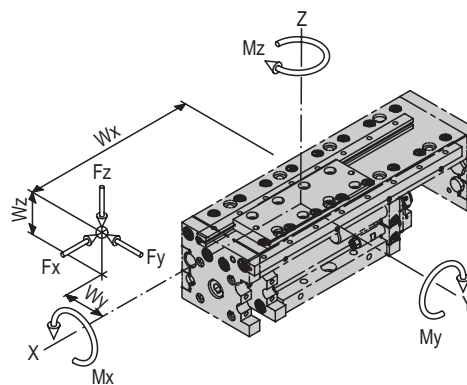


Mounting areas



Note that there might be different mounting positions from one module to another one.
The required connection elements and the range of support columns are depicted in the catalogue HT accessories.

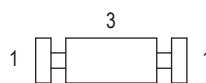
Type	PS 32/50	PS 32/100	PS 32/150	PS 32/200	PS 32/250
Max. static torque Mx	104.7 Nm	130.8 Nm	183.2 Nm	209.2 Nm	261.7 Nm
Max. static torque My	152 Nm	217 Nm	282.1 Nm	347.2 Nm	412.2 Nm
Max. static torque Mz	92.2 Nm	120.4 Nm	150.4 Nm	181.3 Nm	211.7 Nm
Max. dynamic torque Mx	40.3 Nm	50.3 Nm	70.5 Nm	80.5 Nm	100.6 Nm
Max. dynamic torque My	58.3 Nm	83.5 Nm	108.5 Nm	133.5 Nm	158.5 Nm
Max. dynamic torque Mz	35.5 Nm	46.3 Nm	57.9 Nm	69.7 Nm	81.2 Nm
Effective distance Wx	87 mm	112 mm	137 mm	162 mm	187 mm
Effective distance Wz	18.5 mm	18.5 mm	18.5 mm	18.5 mm	18.5 mm



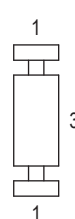
Maximum payload/type	PS 32/50	PS 32/100	PS 32/150	PS 32/200	PS 32/250
Installation position (horizontal) for mounting side 1	12 kg	12 kg	12 kg	12 kg	12 kg
Installation position (horizontal) for mounting side 3	20 kg	20 kg	20 kg	20 kg	20 kg
Installation position (vertical) for mounting side 1	12 kg	12 kg	12 kg	12 kg	12 kg
Installation position (vertical) for mounting side 3	20 kg	20 kg	20 kg	20 kg	20 kg

Assembly sides
module mounting

horizontal:

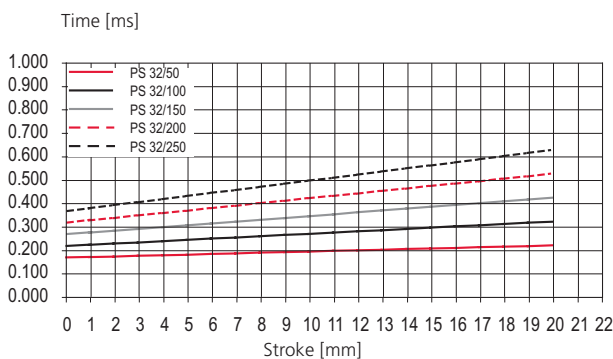


vertical:



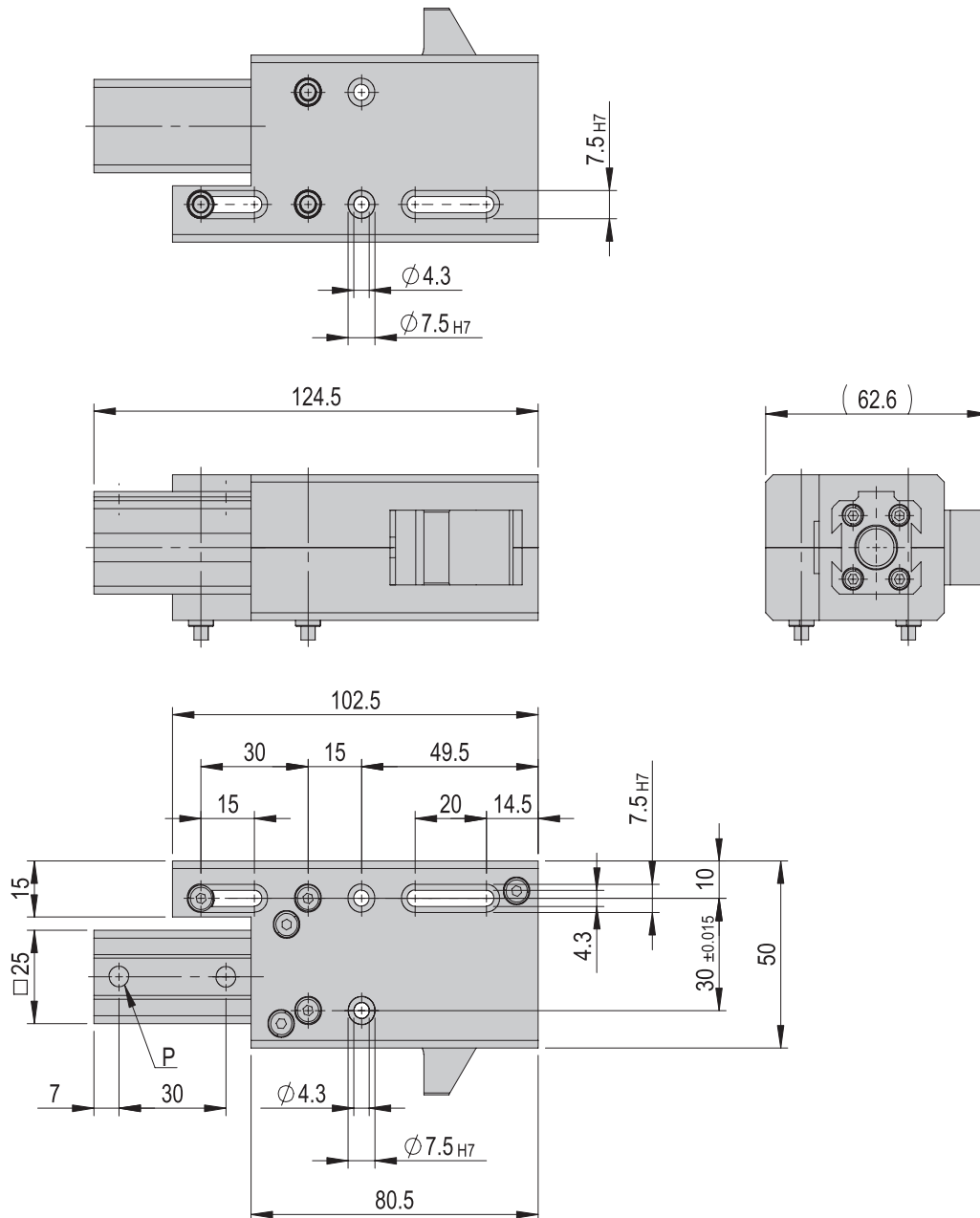
Operation time diagrams

Operation time PS 32



Accessories PS

Intermediate stop ZA-PS 16	ZA-PS 16
Order number	50222736
Net weight	0.5 kg
P	M5



The technical data refer to a nominal pressure of 6 bar under Afag standard test conditions.

Note: The ZA intermediate stops for the PS modules are distinguished by their compact size and construction that is adapted to the module. They can be set in various positions on the module slide grid. Depending on the module stroke length, several intermediate stops may be placed.

The intermediate stop can be easily modified so that it can then be used for retracting or extending movements.

Important: stop angle and shock absorber and adjusting stop screw are included in the delivery.

Included in the delivery

(Catalogue HT accessories)

- 3x Centering bushing ZA-PS 16
- 3x Mounting screw M4x70

Accessories

(Catalogue HT accessories)

- INI 6.3x4.7x26.3-Em-PNP-NO-M8x1
- Cylinder switch ZA-PS

Accessories PS

2

Intermediate stop ZA-PS 25

ZA-PS 25

Order number

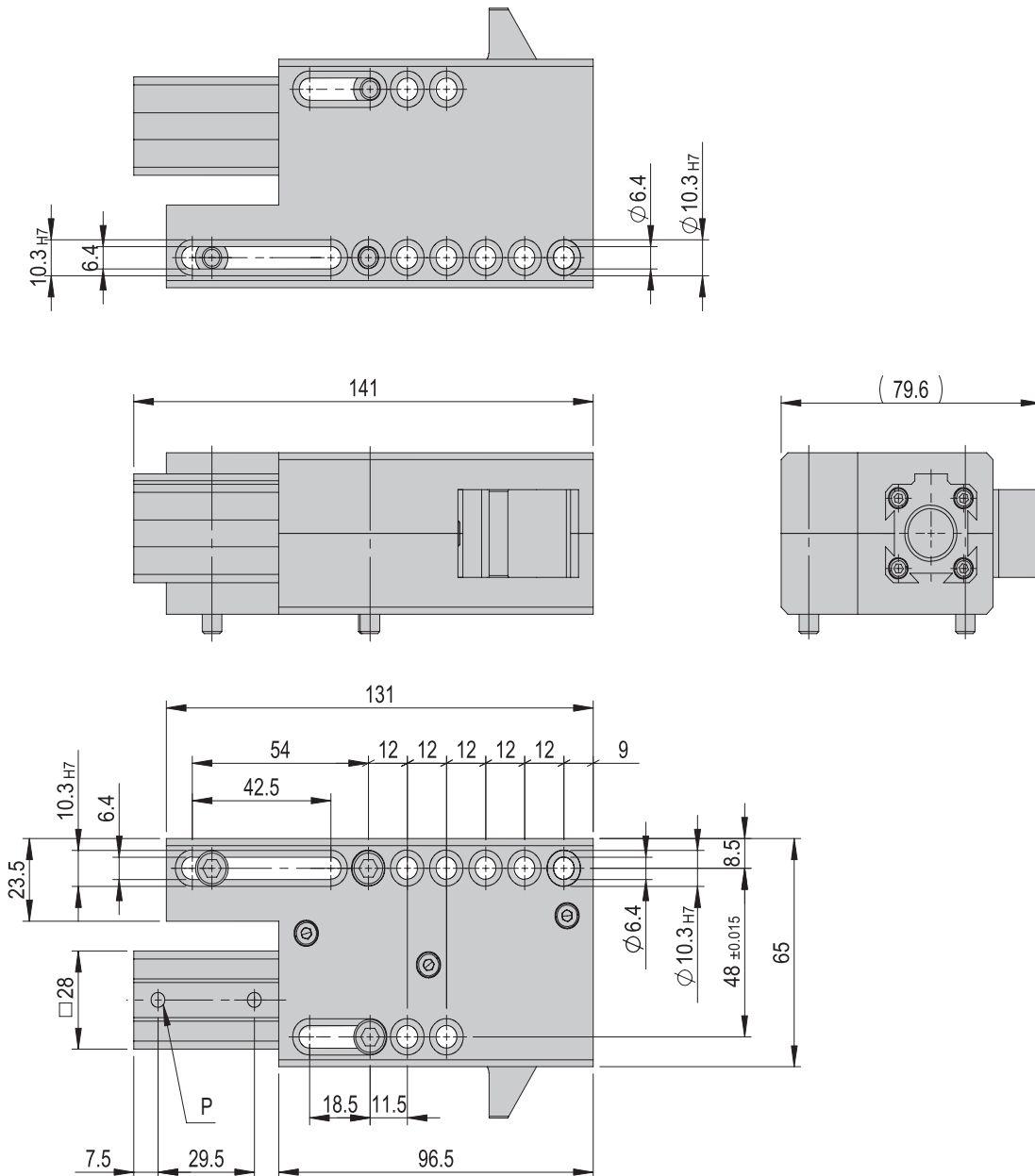
50222737

Net weight

1.296 kg

P

M5



The technical data refer to a nominal pressure of 6 bar under Afag standard test conditions.

Note: The ZA intermediate stops for the PS modules are distinguished by their compact size and construction that is adapted to the module. They can be set in various positions on the module slide grid. Depending on the module stroke length, several intermediate stops may be placed.

The intermediate stop can be easily modified so that it can then be used for retracting or extending movements.

Important: stop angle and shock absorber and adjusting stop screw are included in the delivery.

Included in the delivery

(Catalogue HT accessories)

- 3x Centering bushing ZA-PS 25
- 3x Mounting screw M6x45

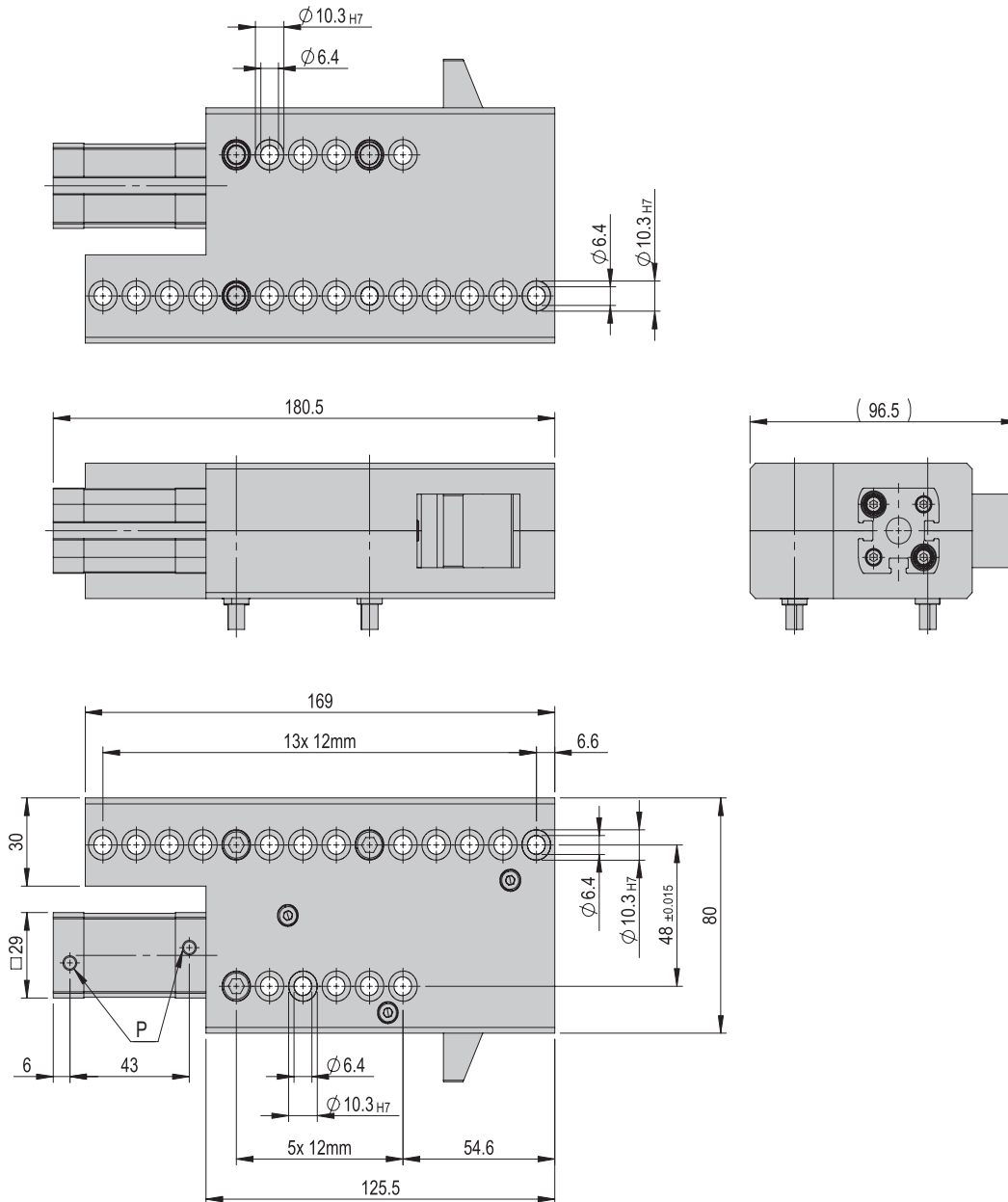
Accessories

(Catalogue HT accessories)

- INI 6.3x4.7x26.3-Em-PNP-NO-M8x1
- Cylinder switch ZA-PS

Accessories PS

Intermediate stop ZA-PS 32	ZA-PS 32
Order number	50222738
Net weight	2.115 kg
P	M5



The technical data refer to a nominal pressure of 6 bar under Afag standard test conditions.

Note: The ZA intermediate stops for the PS modules are distinguished by their compact size and construction that is adapted to the module. They can be set in various positions on the module slide grid. Depending on the module stroke length, several intermediate stops may be placed.

The intermediate stop can be easily modified so that it can then be used for retracting or extending movements.

Important: stop angle and shock absorber and adjusting stop screw are included in the delivery.

Included in the delivery

(Catalogue HT accessories)

- 3x Centering bushing ZA-PS 32
- 3x Mounting screw M6x60

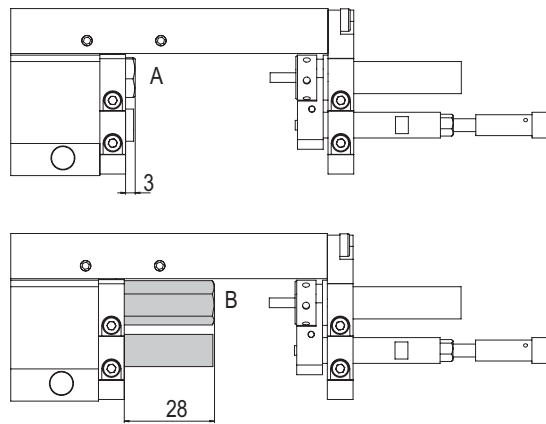
Accessories

(Catalogue HT accessories)

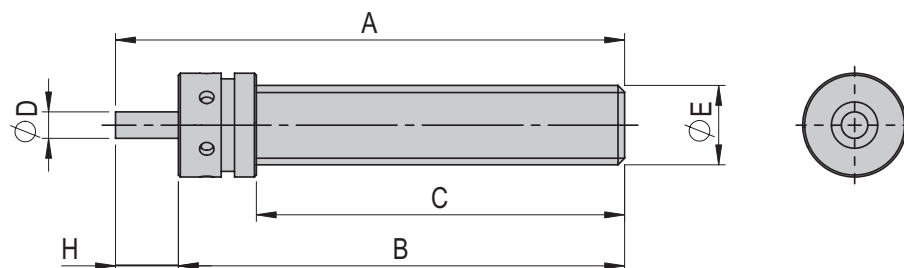
- INI 6.3x4.7x26.3-Em-PNP-NO-M8x1
- Cylinder switch ZA-PS

Accessories PS

Stopper extension for PS	PS 16	PS 25	PS 32
Order number	50138720	50138771	50138842
Net weight	0.013 kg	0.013 kg	0.021 kg
A	Stop position normal	Stop position normal	Stop position normal
B	Stop position with extension	Stop position with extension	Stop position with extension



Stop screw/shock absorber for PS	ASSD M10x1 -1	ASSD M12x1 -1	ASSD M14x1 -1
Order number	50105233	50105234	50105235
Net weight	0.026 kg	0.059 kg	0.1 kg
Max. energy input/stroke	12 Nm	18 Nm	17 Nm
Max. energy input/s	16 800 Nm	42 000 Nm	34 000 Nm
Suitable for	PS 16	PS 25	PS 32
A	59.5 mm	77 mm	102.1 mm
B	51.5 mm	67.5 mm	89 mm
C	41.5 mm	55.7 mm	77.2 mm
D	3 mm	4 mm	4 mm
E	M10x1 mm	M12x1 mm	M14x1 mm
H	8 mm	10 mm	13 mm



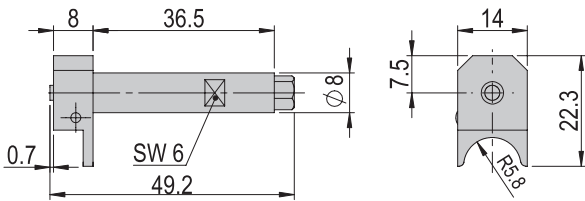
Accessories PS

Proximity switch holder PS 16

Order number 50138506

Net weight 0.024 kg

Suitable for PS 16

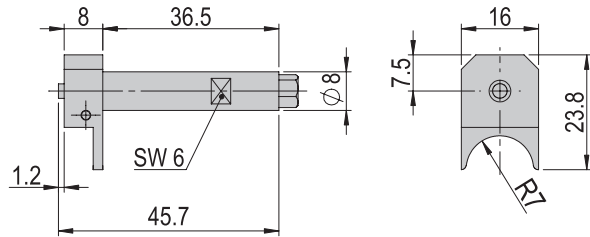


Proximity switch holder PS 25

Order number 50138579

Net weight 0.026 kg

Suitable for PS 25



Proximity switch holder PS 32

Order number 50138592

Net weight 0.028 kg

Suitable for PS 32

