

Shock absorbers

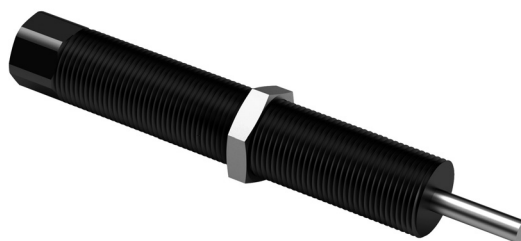
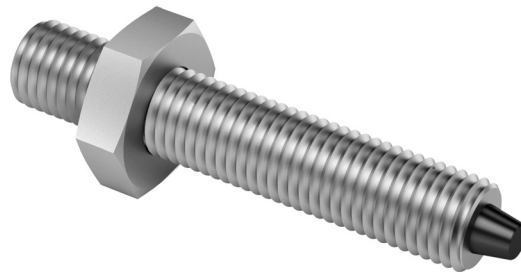


Table of contents: Shock absorbers

| Shock absorbers | Page |
|--------------------------------|-------------|
| Elastomer shock absorber ASED | 56 |
| Accessories ASED | 56 |
| Stop screw/shock absorber ASSD | 57 |
| Shock absorbers SD | 58 |
| Accessories SD | 60 |

| | ASED M4x0.5-1 | ASED M5x0.5-1 | ASED M6x0.5-1 | ASSD M5x0.5-2 | ASSD M6x0.5-4 | ASSD M10x1-1 | ASSD M12x1-1 | ASSD M14x1-1 | SD M6x0.5-2 | SD M6x0.5-3 | SD M8x1-2 | SD M8x1-3 | SD M8x1-4 | SD M8x1-5 | SD M10x1-4 | SD M10x1-5 | SD M12x1-1 | SD M14x1-1 | SD M14x1-2 | SD M20x1.5-1 | SD M25x1.5-1 | |
|--------|---------------|---------------|---------------|---------------|---------------|--------------|--------------|--------------|-------------|-------------|-----------|-----------|-----------|-----------|------------|------------|------------|------------|------------|--------------|--------------|---|
| | 50389768 | 50282683 | 50298509 | 50046138 | 50570560 | 50105233 | 50105234 | 50105235 | 50310020 | 50287720 | 11004990 | 50041089 | 50177008 | 50288020 | 50279077 | 50337721 | 50287972 | 11004987 | 11004988 | 50252844 | 50252854 | |
| CS 6 | ■ | | | | | | | | | | | | | | | | | | | | | |
| CS 8 | | ■ | | ■ | | | | | | | | | | | | | | | | | | |
| CS 12 | | | ■ | | ■ | | | | | | | | | | | | | | | | | |
| CS 16 | | | | | | | | | | | | ■ | | | | | | | | | | |
| CS 20 | | | | | | | | | | | | | | | | ■ | | | | | | |
| CS 25 | | | | | | | | | | | | | | | | | | | | ■ | | |
| PS 16 | | | | | | ■ | | | | | | | | | | | | | | | | |
| PS 25 | | | | | | | ■ | | | | | | | | | | | | | | | |
| PS 32 | | | | | | | | ■ | | | | | | | | | | | | | | |
| LM 12 | | | | | | | | | | | ■ | | | | | | | | | | | |
| LM 16 | | | | | | | | | | | ■ | | | | | | | | | | | |
| LM 20 | | | | | | | | | | | | | | | | | | | ■ | | | |
| LM 25 | | | | | | | | | | | | | | | | | | | ■ | | | |
| LM 32 | | | | | | | | | | | | | | | | | | | ■ | | | |
| HM 10 | | | | | | | | | ■ | | | | | | | | | | | | | |
| HM 16 | | | | | | | | | | | | | | ■ | | | | | | | | |
| HM 25 | | | | | | | | | | | | | | | | | ■ | | | | | |
| PMP | | | | | | | | | | | | | | | | | | | | ■ | | |
| PMP-c | | | | | | | | | | | | | | | | | | | | ■ | | |
| CR 12 | | | | | | | | | ■ | | | | | | | | | | | | | |
| CR 16 | | | | | | | | | | | | | | | | ■ | | | | | | |
| CR 20 | | | | | | | | | | | | | | | | ■ | | | | | | |
| CR 25 | | | | | | | | | | | | | | | | | | | | | ■ | |
| CR 32 | | | | | | | | | | | | | | | | | | | | | | ■ |
| RM 12 | | | | | | | | | | | ■ | | | | | | | | | | | |
| RM 16 | | | | | | | | | | | | ■ | | | | | | | | | | |
| RM 25 | | | | | | | | | | | | | | | | | | | ■ | | | |
| RM 32 | | | | | | | | | | | | | | | | | | | | ■ | | |
| RM 63 | | | | | | | | | | | | | | | | | | | | | ■ | |
| GMQ 12 | | | | | | | | | | | ■ | | | | | | | | | | | |
| GMQ 20 | | | | | | | | | | | ■ | | | | | | | | | | | |
| GMQ 32 | | | | | | | | | | | ■ | | | | | | | | | | | |

x This shock absorber (SD) may only be operated with Afag stop sleeves.

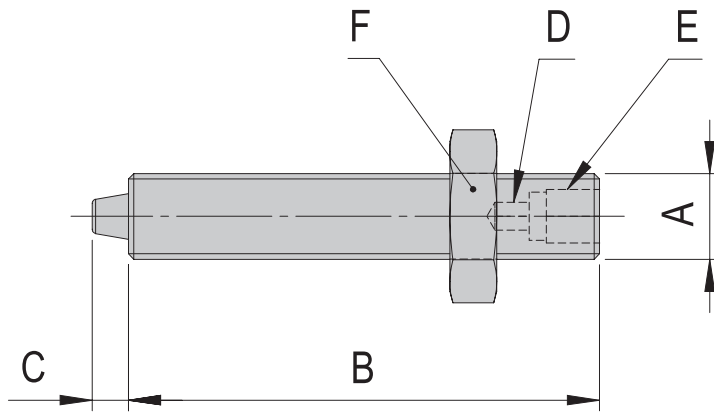
ASED: Stop screw with elastic shock absorber

ASSD: Stop screw with shock absorberr

SD: Shock absorber

Elastomer damper ASED

| Elastomer shock absorber ASED | M4x0.5 -1 | M5x05 -1 | M6x0.5 -1 |
|-------------------------------|-----------------|-----------------|-----------------|
| Order number | 50389768 | 50282683 | 50298509 |
| Net weight | 0.002 kg | 0.003 kg | 0.006 kg |
| Repeat accuracy | +/- 0.01 mm | +/- 0.01 mm | +/- 0.01 mm |
| Max. energy input/stroke | 0.005 Nm | 0.02 Nm | 0.03 Nm |
| Max. energy input/s | 8 Nm | 32.4 Nm | 48 Nm |
| Suitable for | CS 6/...-ED | CS 8/...-ED | CS 12/...-ED |
| A | M4 x 0.5 | M5 x 0.5 | M6 x 0.5 |
| B | 22 mm | 26 mm | 30 mm |
| C | 1.7 mm | 2.8 mm | 3.1 mm |
| D | SW 1.3 mm | SW 1.5 mm | SW 2 mm |
| E | SW 2.5 mm | SW 3 mm | SW 4 mm |



Accessories

- Absorbing element for ASED M4x0.5 -1 [S. 56]
- Absorbing element for ASED M5/M6x0.5 -1 [S. 56]

Accessories ASED

| Absorbing element for ASED M4x0.5 -1 | |
|--------------------------------------|-----------------|
| Order number | 50400874 |
| Net weight | 0.001 kg |
| Suitable for | ASED M4x0.5-1 |

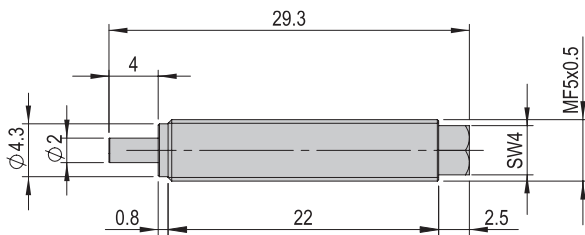
| Absorbing element for ASED M5xM6x0.5 -1 | |
|---|------------------|
| Order number | 50286941 |
| Net weight | 0.001 kg |
| Suitable for | ASED M5/M6x0.5-1 |



Stop screw/Shock absorber ASSD

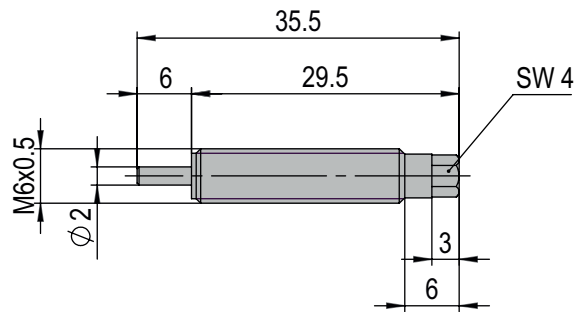
Stop screw/shock absorber ASSD M5

| | |
|--------------------------|-----------------|
| Order number | 50046138 |
| Net weight | 0.005 kg |
| Max. energy input/stroke | 0.6 Nm |
| Max. energy input/s | 1 800 Nm |
| Suitable for | CS 8/...-SD |



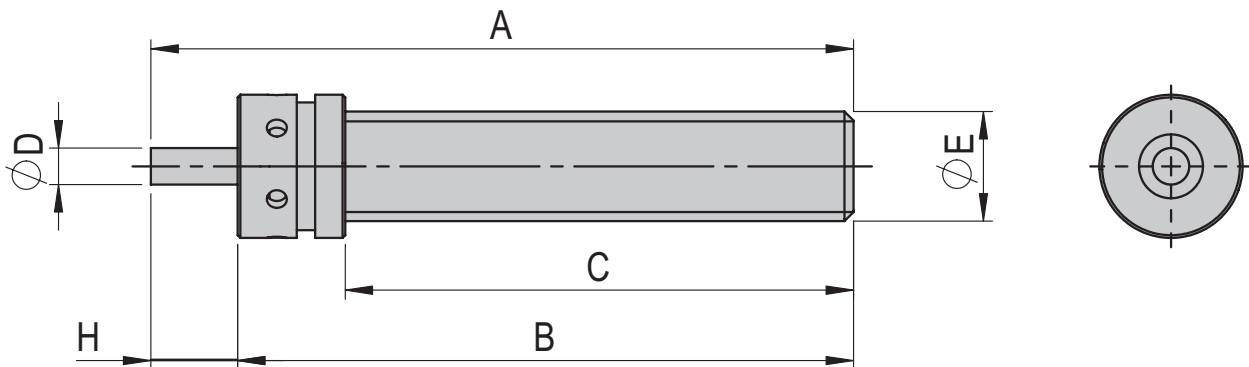
Stop screw/shock absorber ASSD M6

| | |
|--------------------------|-----------------|
| Order number | 50570560 |
| Net weight | 0.003 kg |
| Max. energy input/stroke | 1 Nm |
| Max. energy input/s | 2 000 Nm |
| Suitable for | CS 12/...-SD |



Stop screw/shock absorber ASSD M10/M12/M14

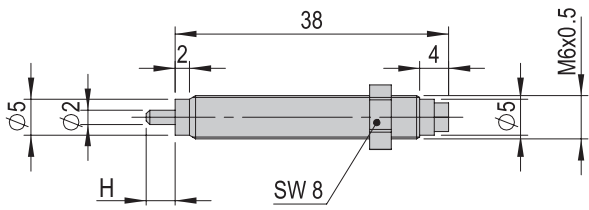
| | M10x1 -1 | M12x1 -1 | M14x1 -1 |
|--------------------------|-----------------|-----------------|-----------------|
| Order number | 50105233 | 50105234 | 50105235 |
| Net weight | 0.026 kg | 0.059 kg | 0.1 kg |
| Max. energy input/stroke | 12 Nm | 18 Nm | 17 Nm |
| Max. energy input/s | 16 800 Nm | 42 000 Nm | 34 000 Nm |
| Suitable for | PS 16 | PS 25 | PS 32 |
| A | 59.5 mm | 77 mm | 102.1 mm |
| B | 51.5 mm | 67.5 mm | 89 mm |
| C | 41.5 mm | 55.7 mm | 77.2 mm |
| D | 3 mm | 4 mm | 4 mm |
| E | M10x1 mm | M12x1 mm | M14x1 mm |
| H | Stroke | Stroke | Stroke |



Shock absorbers SD

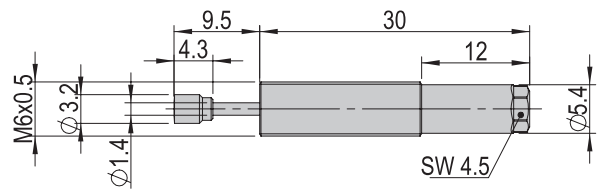
Shock absorber SD M6x0.5 -2

| | |
|--------------------------|-----------------|
| Order number | 50310020 |
| Stroke H | 4 mm |
| Net weight | 0.007 kg |
| Max. energy input/stroke | 1.5 Nm |
| Max. energy input/s | 3 200 Nm |
| Suitable for | CR 12 |



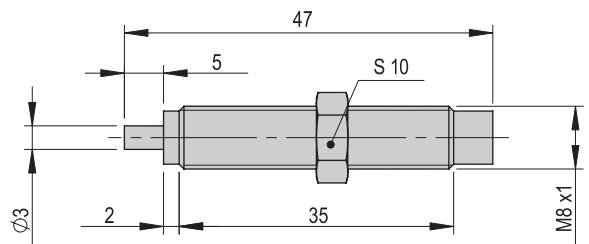
Shock absorber SD M6x0.5 -3

| | |
|--------------------------|-----------------|
| Order number | 50287720 |
| Net weight | 0.007 kg |
| Max. energy input/stroke | 1 Nm |
| Max. energy input/s | 2 400 Nm |
| Suitable for | HM 10 |



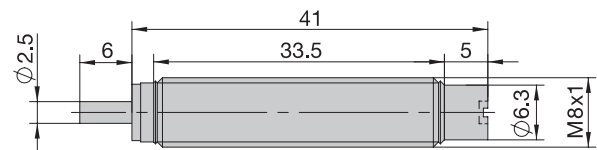
Shock absorber SD M8x1 -2

| | |
|--------------------------|--|
| Order number | 11004990 |
| Net weight | 0.016 kg |
| Max. energy input/stroke | 3 Nm |
| Max. energy input/s | 5 650 Nm |
| Suitable for | LM 12, LM 16 RM 12 GMQ 12, GMQ 20, GMQ 32 |



Shock absorber SD M8x1 -3

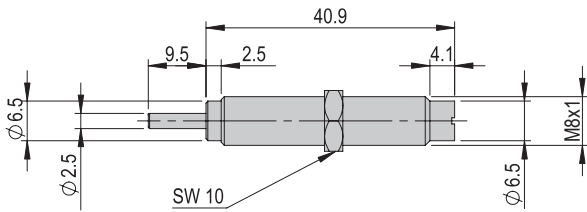
| | |
|--------------------------|-----------------|
| Order number | 50041089 |
| Net weight | 0.011 kg |
| Max. energy input/stroke | 3 Nm |
| Max. energy input/s | 5 650 Nm |
| Suitable for | RM 16 |



Shock absorbers SD

Shock absorber SD M8x1 -4

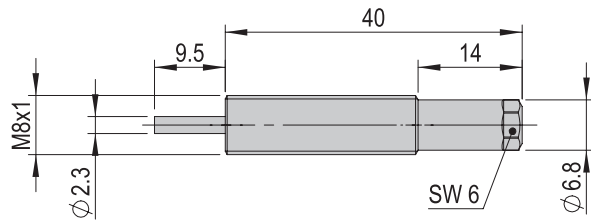
| | |
|--------------------------|-----------------|
| Order number | 50177008 |
| Net weight | 0.001 kg |
| Max. energy input/stroke | 3.5 Nm |
| Max. energy input/s | 5 600 Nm |
| Suitable for | CS 16 |



Note: The shock absorber may only be operated with the stop sleeve!

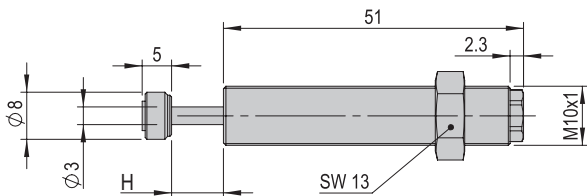
Shock absorber SD M8x1 -5

| | |
|--------------------------|-----------------|
| Order number | 50288020 |
| Net weight | 0.013 kg |
| Max. energy input/stroke | 4 Nm |
| Max. energy input/s | 9 000 Nm |
| Suitable for | HM 16 |



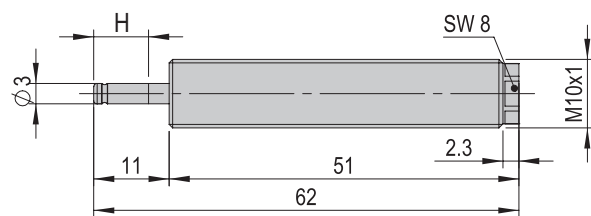
Shock absorber SD M10x1 -4

| | |
|--------------------------|-----------------|
| Order number | 50279077 |
| Stroke H | 8 mm |
| Net weight | 0.038 kg |
| Max. energy input/stroke | 12 Nm |
| Max. energy input/s | 20 000 Nm |
| Suitable for | CR 16, CR 20 |



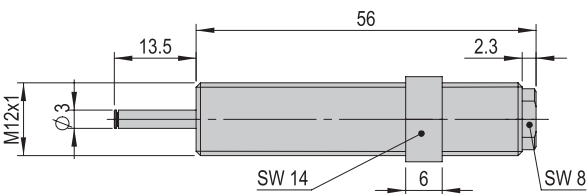
Shock absorber SD M10x1 -5

| | |
|--------------------------|-----------------|
| Order number | 50337721 |
| Stroke H | 8 mm |
| Net weight | 0.02 kg |
| Max. energy input/stroke | 10 Nm |
| Max. energy input/s | 18 000 Nm |
| Suitable for | CS 20 |



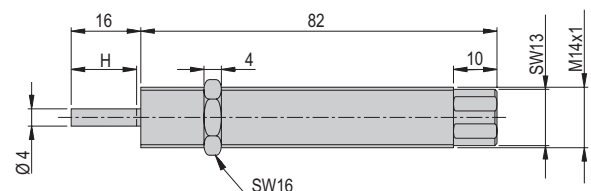
Shock absorber SD M12x1 -1

| | |
|--------------------------|-----------------|
| Order number | 50287972 |
| Net weight | 0.035 kg |
| Max. energy input/stroke | 16 Nm |
| Max. energy input/s | 30 000 Nm |
| Suitable for | HM 25 |



Shock absorber SD M14x1 -1

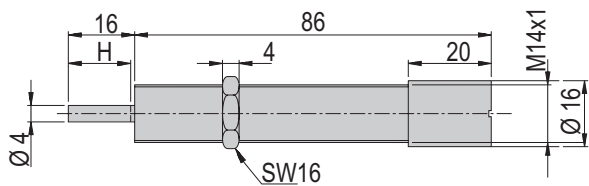
| | |
|--------------------------|--|
| Order number | 11004987 |
| Stroke H | 15 mm |
| Net weight | 0.065 kg |
| Max. energy input/stroke | 15 Nm |
| Max. energy input/s | 32 000 Nm |
| Suitable for | LM 20, LM 25, LM 32 RM 25 PMP, PMP-c |



Shock absorbers SD

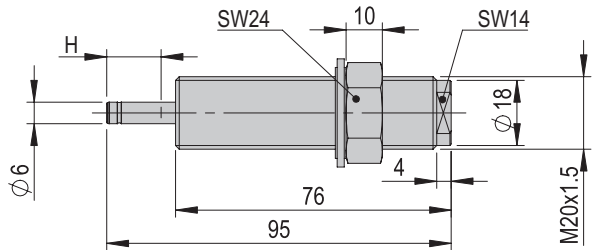
Shock absorber SD M14x1 -2

| | |
|--------------------------|-----------------------|
| Order number | 11004988 |
| Stroke H | 15 mm |
| Net weight | 0.077 kg |
| Max. energy input/stroke | 17 Nm |
| Max. energy input/s | 34 000 Nm |
| Suitable for | RM 32, RM 63 CS 25 |



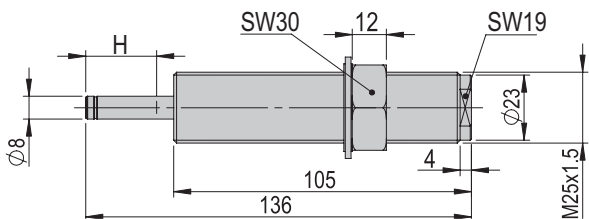
Shock absorber SD M20x1.5 -1

| | |
|--------------------------|-----------------|
| Order number | 50252844 |
| Stroke H | 15 mm |
| Net weight | 0.07 kg |
| Max. energy input/stroke | 80 Nm |
| Max. energy input/s | 80 000 Nm |
| Suitable for | CR 25 |



Shock absorber SD M25x1.5 -1

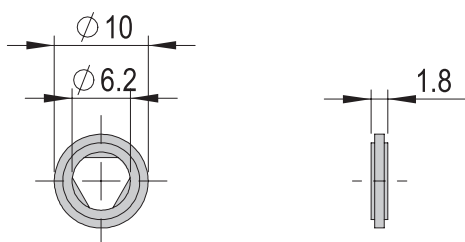
| | |
|--------------------------|-----------------|
| Order number | 50252854 |
| Stroke H | 25 mm |
| Net weight | 0.106 kg |
| Max. energy input/stroke | 210 Nm |
| Max. energy input/s | 120 000 Nm |
| Suitable for | CR 32 |



Accessories SD

Seal for SD M6x 0.5-2

| | |
|---------------------|-----------------|
| Order number | 50310021 |
| Net weight | 0.001 kg |
| Suitable for | SD M6x0.5-2 |



Seal for SD M10x 1-4

| | |
|---------------------|-----------------|
| Order number | 50300442 |
| Net weight | 0.002 kg |
| Suitable for | SD M10x1-4 |

