

Rotary modules RE

RE-50 - RE-75

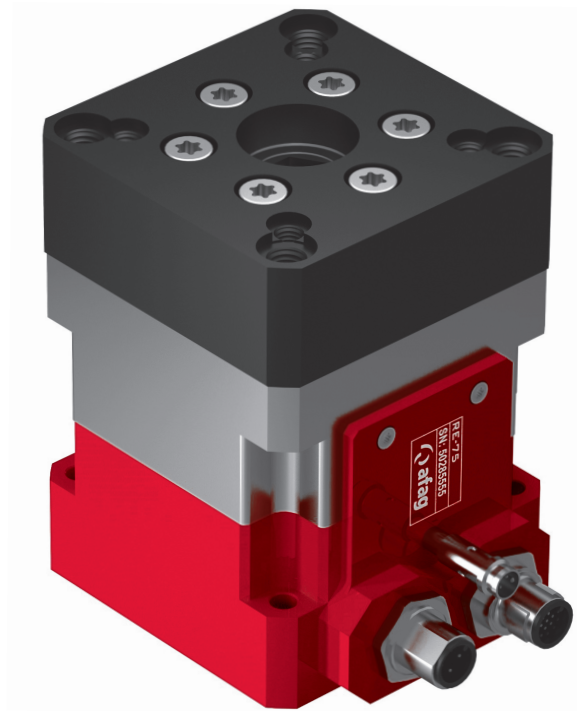
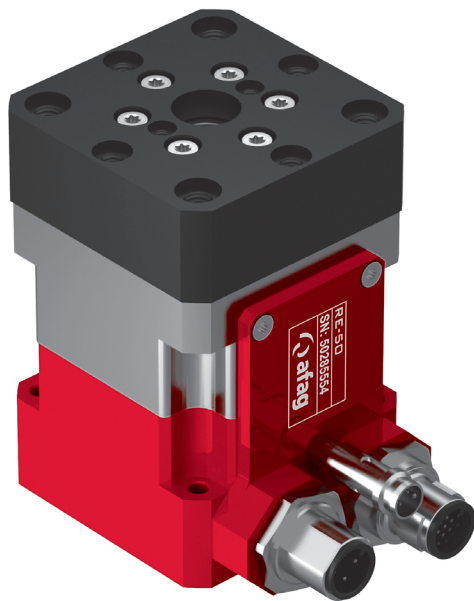
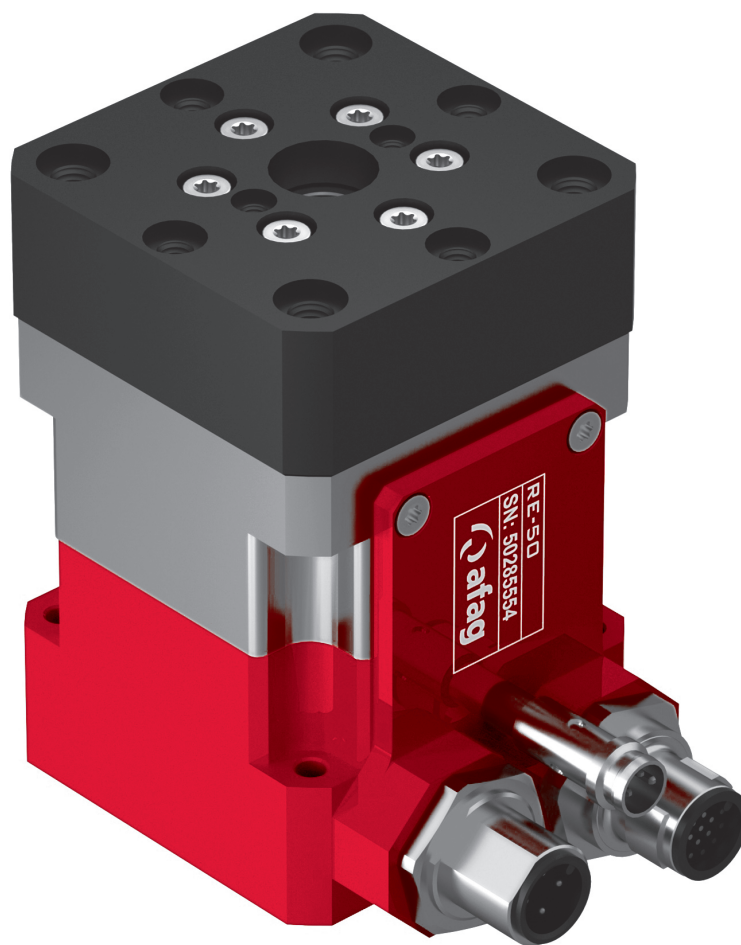


Table of contents: RE

| Rotary modules RE | | Page |
|-------------------|--|------|
| RE-50 | | 210 |
| RE-75 | | 216 |
| Accessories RE | | 221 |

Rotary module RE

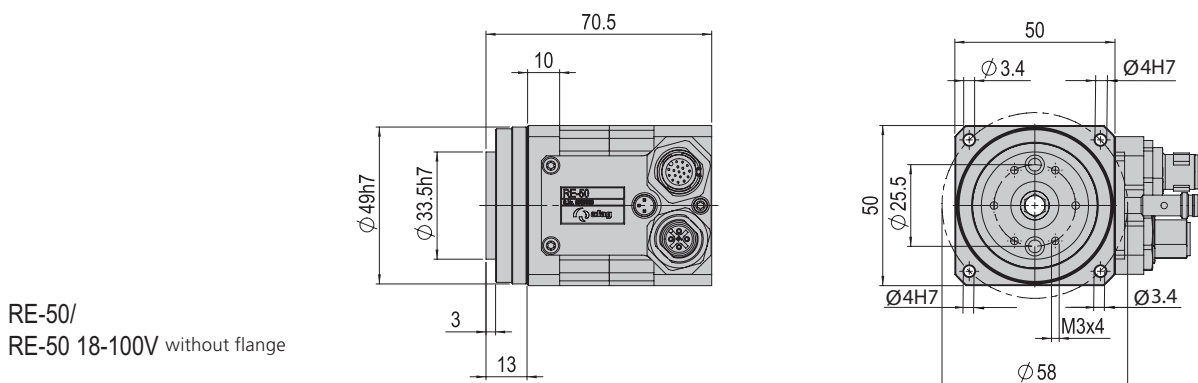
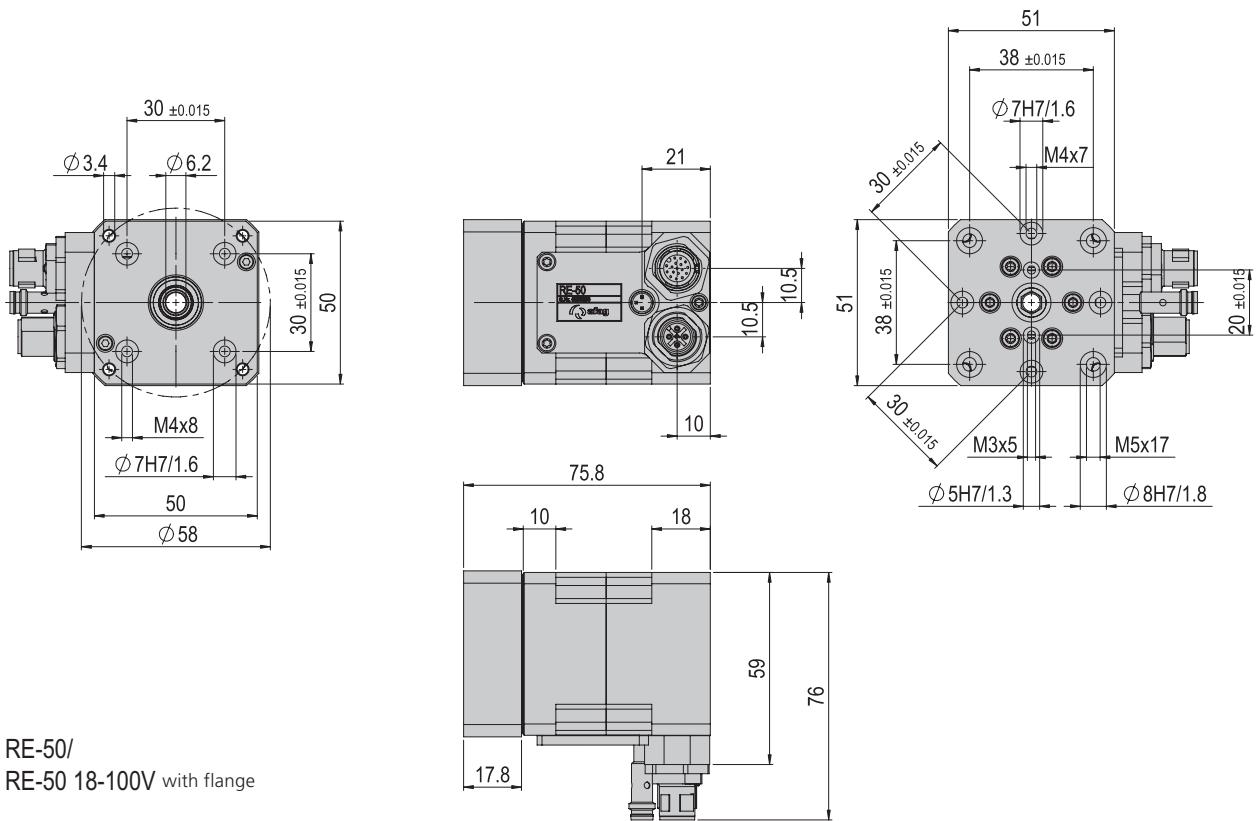
RE-50



- Very compact
- High torque
- Plug & Go (ready for installation)

Dimensions and dimension drawings

RE-50





| RE-50 | |
|-------------------------------------|------------|
| Attachment grid rear | 30 x 30 mm |
| Attachment grid rear LK Ø | 58 mm |
| Attachment grid, front | 30 x 30 mm |
| Attachment grid, front, alternative | 38 x 38 mm |
| Operating temperature | 0 - 40 °C |
| Storage temperature | 0 - 50 °C |

| Type | RE-50 | RE-50 without flange | RE-50 18-100V | RE-50 18-100V without flange |
|-----------------------------|-----------------|----------------------|-----------------|------------------------------|
| Order number | 50285554 | 50294005 | 50328767 | 50328768 |
| Net weight | 0.575 kg | 0.502 kg | 0.575 kg | 0.502 kg |
| Max. payload, radial | *0 - 800 N | *0 - 800 N | *0 - 800 N | *0 - 800 N |
| Max. payload, axial | *0 - 200 N | *0 - 200 N | *0 - 200 N | *0 - 200 N |
| Max. rotational speed | *200 rpm | *200 rpm | */ **200 rpm | *200 rpm |
| Noise level | < 65 dB (A) | < 65 dB (A) | < 65 dB (A) | < 65 dB (A) |
| Repeat accuracy | +/- 0.0017 ° | +/- 0.0017 ° | +/- 0.0017 ° | +/- 0.0017 ° |
| Hollow shaft Ø | 6.2 mm | 6.2 mm | 6.2 mm | 6.2 mm |
| Operating voltage | 230 V | 230 V | 18 - 100 V | 18 - 100 V |
| Nominal torque | 0.75 Nm | 0.75 Nm | 0.75 Nm | 0.75 Nm |
| Max. output torque | *1.8 Nm | *1.8 Nm | *1.8 Nm | *1.8 Nm |
| Max. static tipping torque | 93 Nm | 93 Nm | 93 Nm | 93 Nm |
| Max. dynamic tipping torque | 15 Nm | 15 Nm | 15 Nm | 15 Nm |
| Tipping strength | 5.8 Nm/arcmin | 5.8 Nm/arcmin | 5.8 Nm/arcmin | 5.8 Nm/arcmin |
| Protection type | IP 40 | IP 40 | IP 40 | IP 40 |
| Ratio | i = 30 | i = 30 | i = 30 | i = 30 |
| Nominal speed | 117 rpm | 117 rpm | 117 rpm | 117 rpm |
| Mounting position | ✦ | ✦ | ✦ | ✦ |

The technical data pertains to Afag standard test conditions.
Cleanroom class ISO 14644-1, class ISO 7

*The maximum values listed above depend on the application and must not be combined. In case of doubt, please contact your Afag partner
**With SE-24: 117 rpm

Included in the delivery

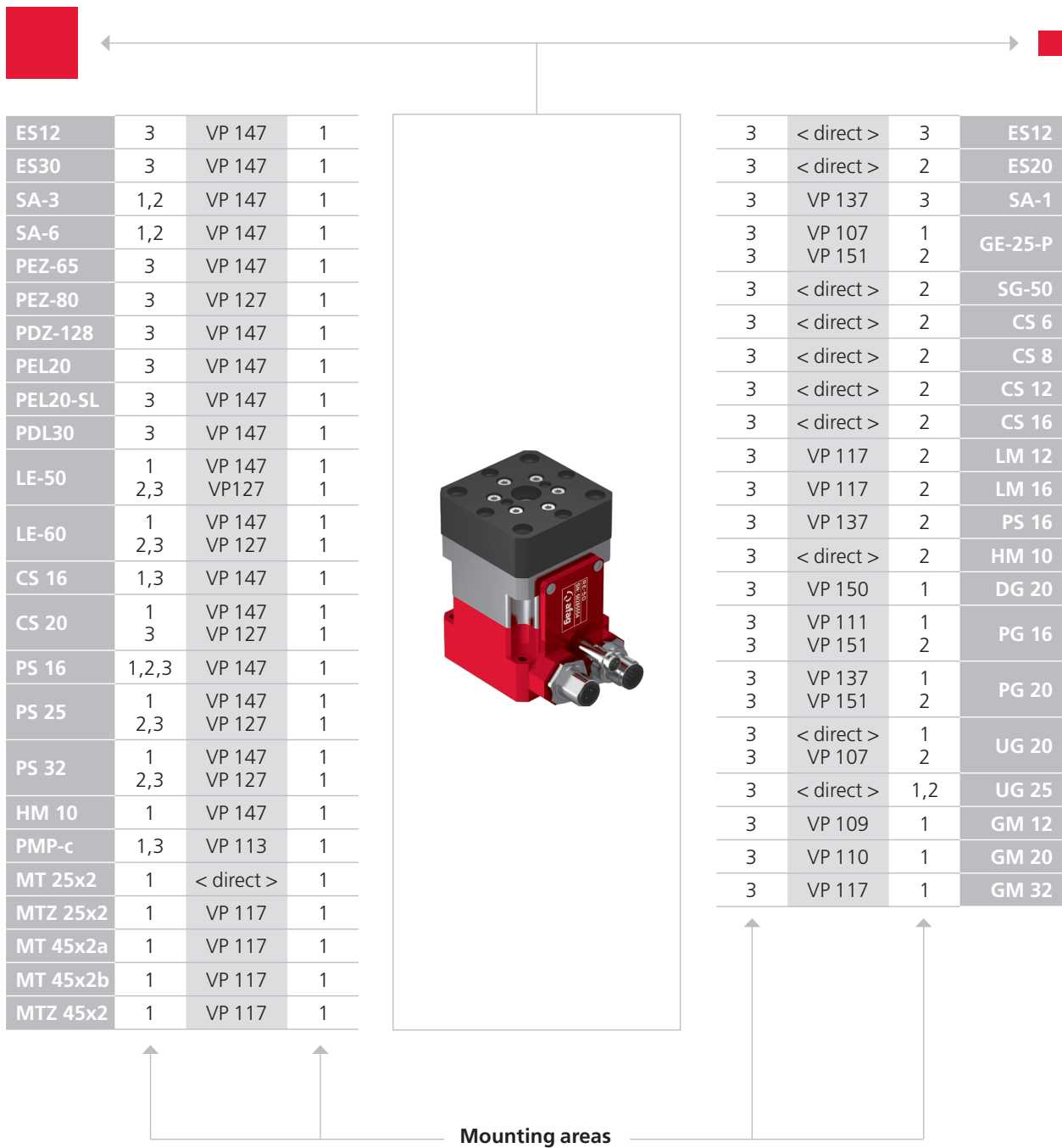
(Catalogue HT accessories)

- 2x Centering bushing Ø7x3
- 4x Mounting screw M3x22

Accessories

- Flange plate set RE-50 [p. 221]

Warranty: 24 months following commissioning, but a maximum of 27 months following delivery

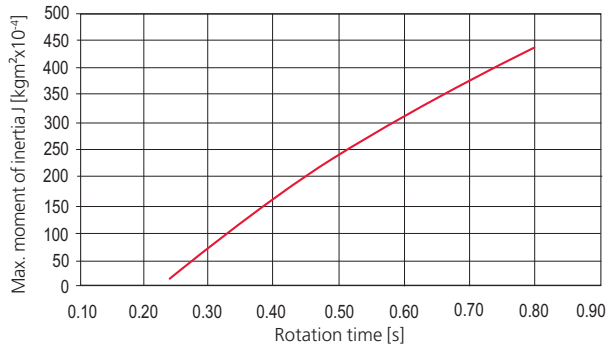


| | | | | | |
|----------------|--------------|--------------|-------------------|------------|-----------------------------------|
| CS, ES | PS | LM, LE | HM | SA | OZ |
| PMP, PMP-c | PEZ, PDZ | PEL, PDL | CR, RM 32, RE | RM, RE | UG, GM, GE, SG, DG, PG, GM RE |

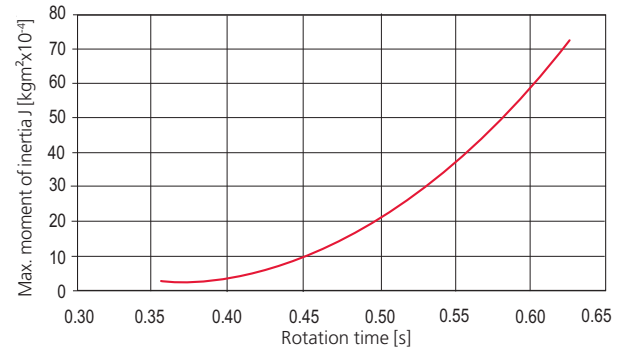
Note that there might be different mounting positions from one module to another one.
The required connection elements and the range of support columns are depicted in the catalogue HT accessories.

Load diagrams

Rotation time RE-50, 180° - horizontal with SE power

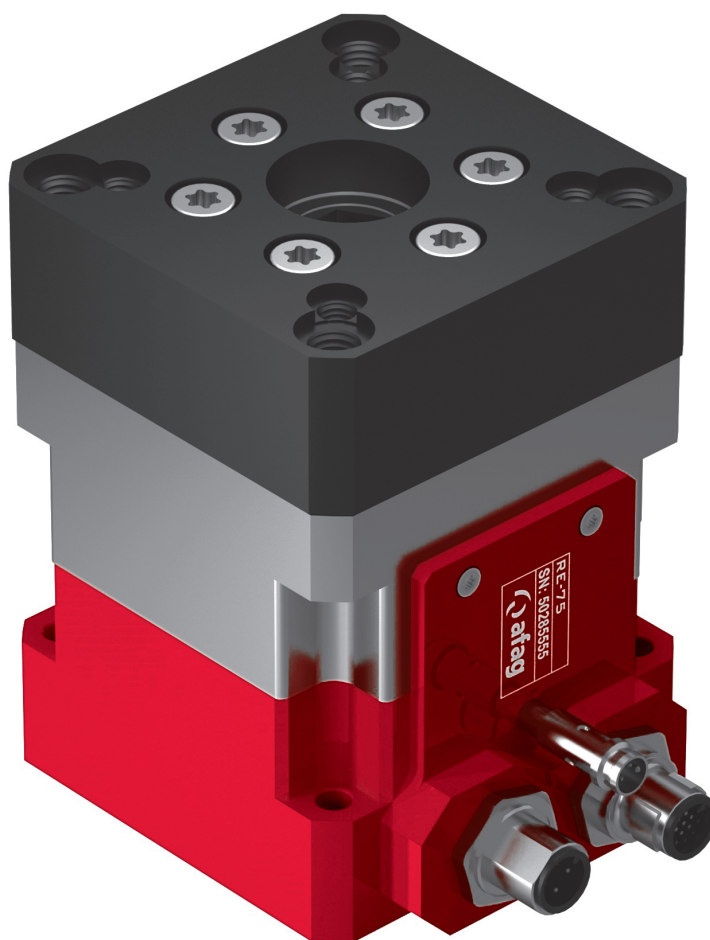


Rotation time RE-50 18-100V, 180° - horizontal with SE-24



Rotary module RE

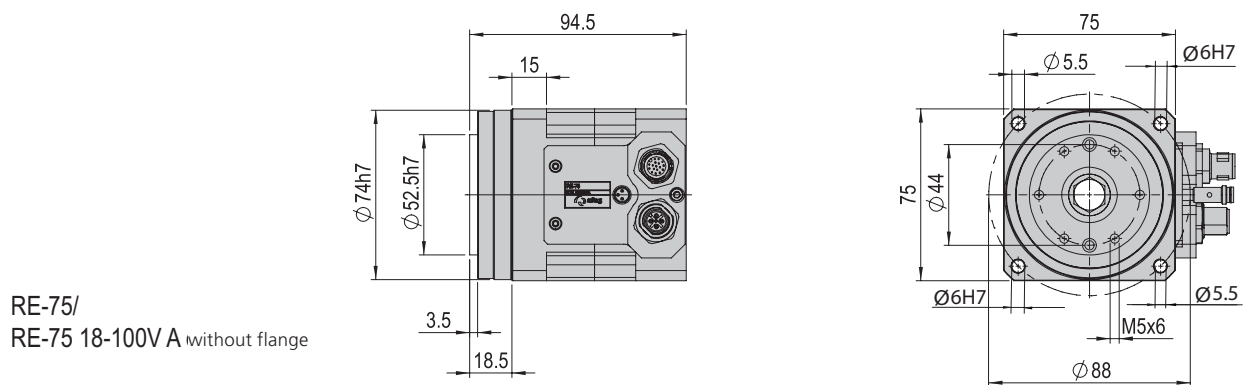
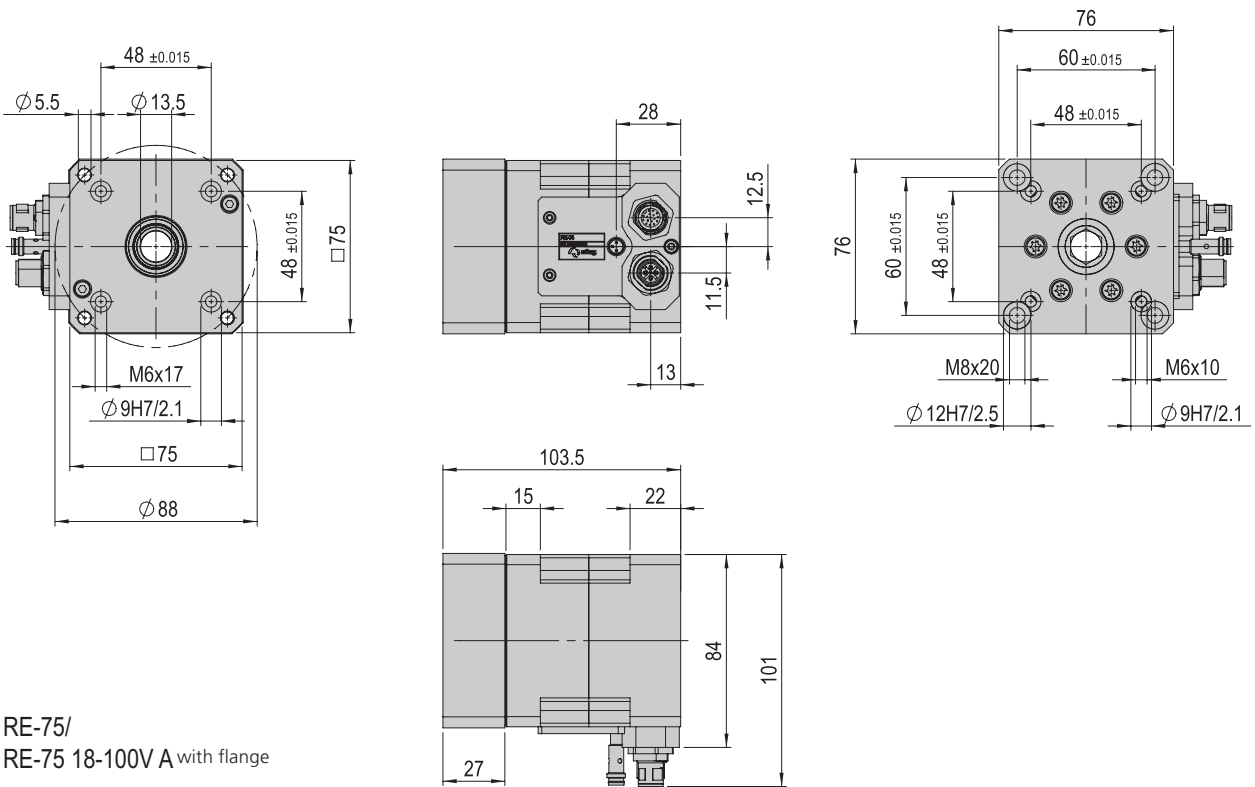
RE-75

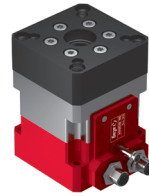


- Very compact
- High torque
- Plug & Go (ready for installation)

Dimensions and dimension drawings

RE-75





| RE-75 | |
|-------------------------------------|------------|
| Attachment grid rear | 48 x 48 mm |
| Attachment grid rear LK Ø | 88 mm |
| Attachment grid, front | 48 x 48 mm |
| Attachment grid, front, alternative | 60 x 60 mm |
| Operating temperature | 0 - 40 °C |
| Storage temperature | 0 - 50 °C |

| Type | RE-75 | RE-75 without flange | RE-75 18-100V A | RE-75 18-100V A without flange |
|-----------------------------|-----------------|----------------------|-----------------|--------------------------------|
| Order number | 50285555 | 50294006 | 50545220 | 50545219 |
| Net weight | 1.725 kg | 1.482 kg | 1.725 kg | 1.482 kg |
| Max. payload, radial | *0 - 1200 N | *0 - 1200 N | *0 - 1200 N | *0 - 1200 N |
| Max. payload, axial | *0 - 600 N | *0 - 600 N | *0 - 600 N | *0 - 600 N |
| Max. rotational speed | *200 rpm | *200 rpm | *200 rpm | *200 rpm |
| Noise level | < 65 dB (A) | < 65 dB (A) | < 65 dB (A) | < 65 dB (A) |
| Repeat accuracy | +/- 0.0017 ° | +/- 0.0017 ° | +/- 0.0017 ° | +/- 0.0017 ° |
| Hollow shaft Ø | 13.5 mm | 13.5 mm | 13.5 mm | 13.5 mm |
| Operating voltage | 230 V | 230 V | 18 - 100 V | 18 - 100 V |
| Nominal torque | 3.5 Nm | 3.5 Nm | 3.5 Nm | 3.5 Nm |
| Max. output torque | *9 Nm | *9 Nm | *9 Nm | *9 Nm |
| Max. static tipping torque | 230 Nm | 230 Nm | 230 Nm | 230 Nm |
| Max. dynamic tipping torque | 75 Nm | 75 Nm | 75 Nm | 75 Nm |
| Tipping strength | 23.5 Nm/arcmin | 23.5 Nm/arcmin | 23.5 Nm/arcmin | 23.5 Nm/arcmin |
| Protection type | IP 40 | IP 40 | IP 40 | IP 40 |
| Ratio | i = 30 | i = 30 | i = 30 | i = 30 |
| Nominal speed | 100 rpm | 100 rpm | 100 rpm | 100 rpm |
| Mounting position | ✦ | ✦ | ✦ | ✦ |

The technical data pertains to Afag standard test conditions.
Cleanroom class ISO 14644-1, class ISO 7

*The maximum values listed above depend on the application and must not be combined. In case of doubt, please contact your Afag partner.

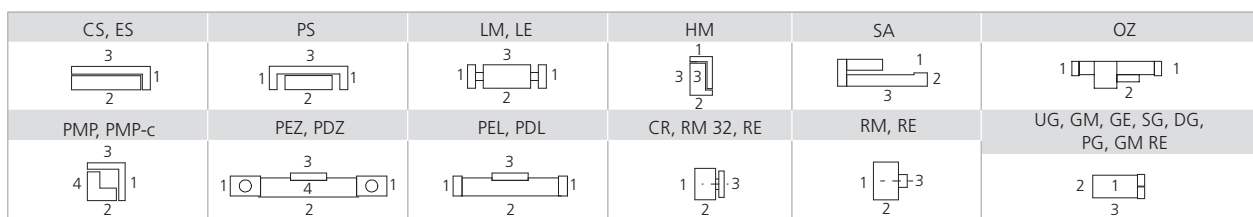
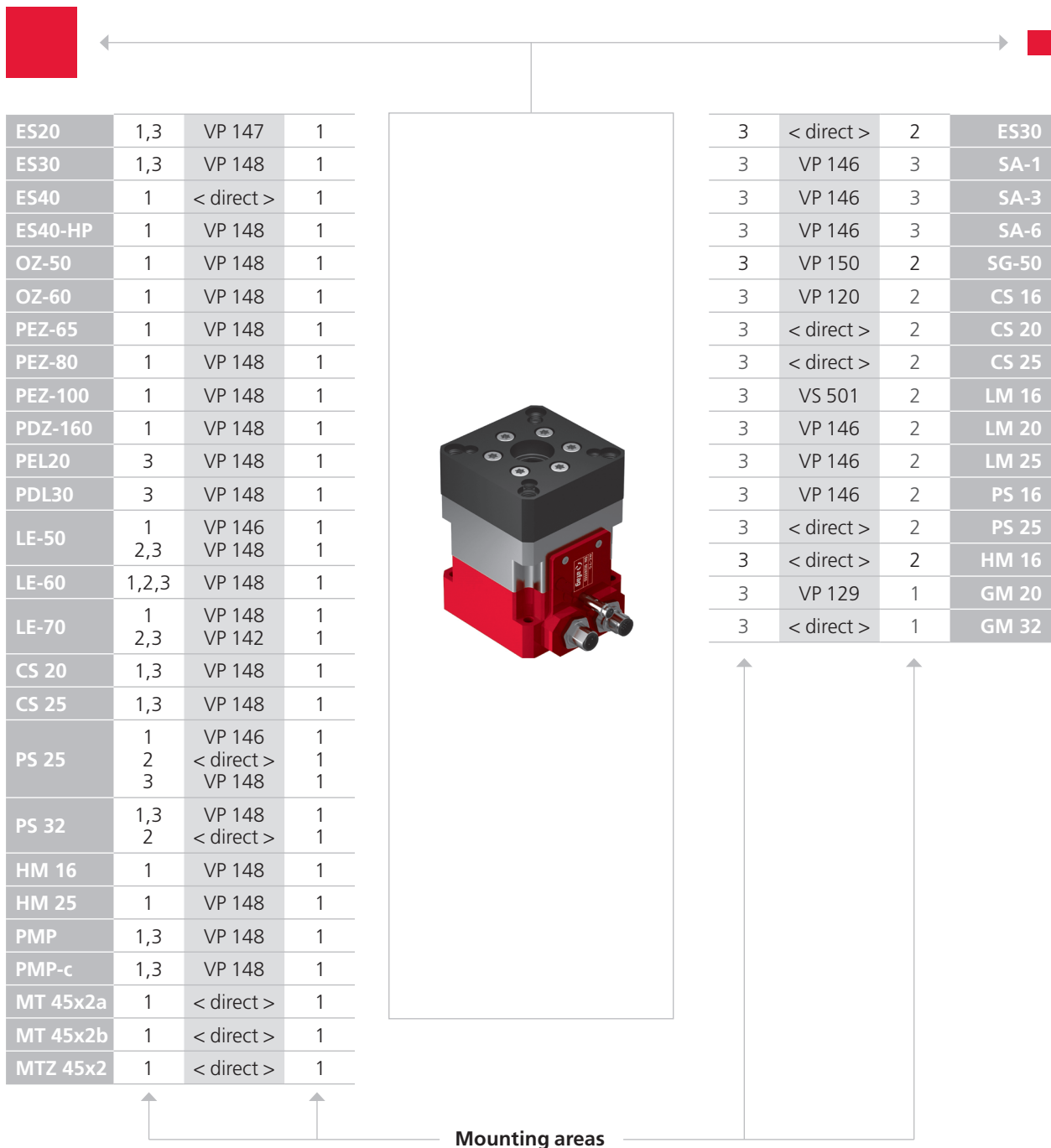
Included in the delivery

- (Catalogue HT accessories)
- 2x Centering bushing Ø9x4
 - 2x Mounting screw M5x30

Accessories

- Flange plate set RE-75 [p. 221]
- (Catalogue HT accessories)
- INI d5x36-Sn2.0-PNP-NC-M8x1

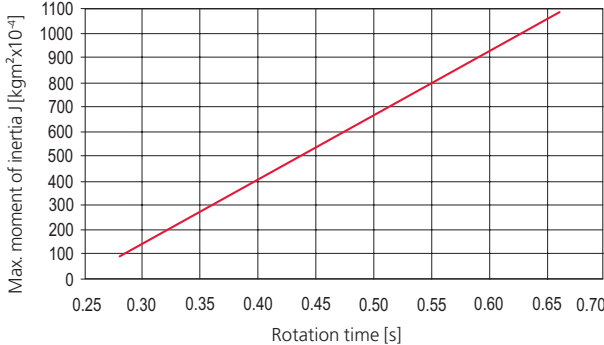
Warranty: 24 months following commissioning, but a maximum of 27 months following delivery



Note that there might be different mounting positions from one module to another one.
The required connection elements and the range of support columns are depicted in the catalogue HT accessories.

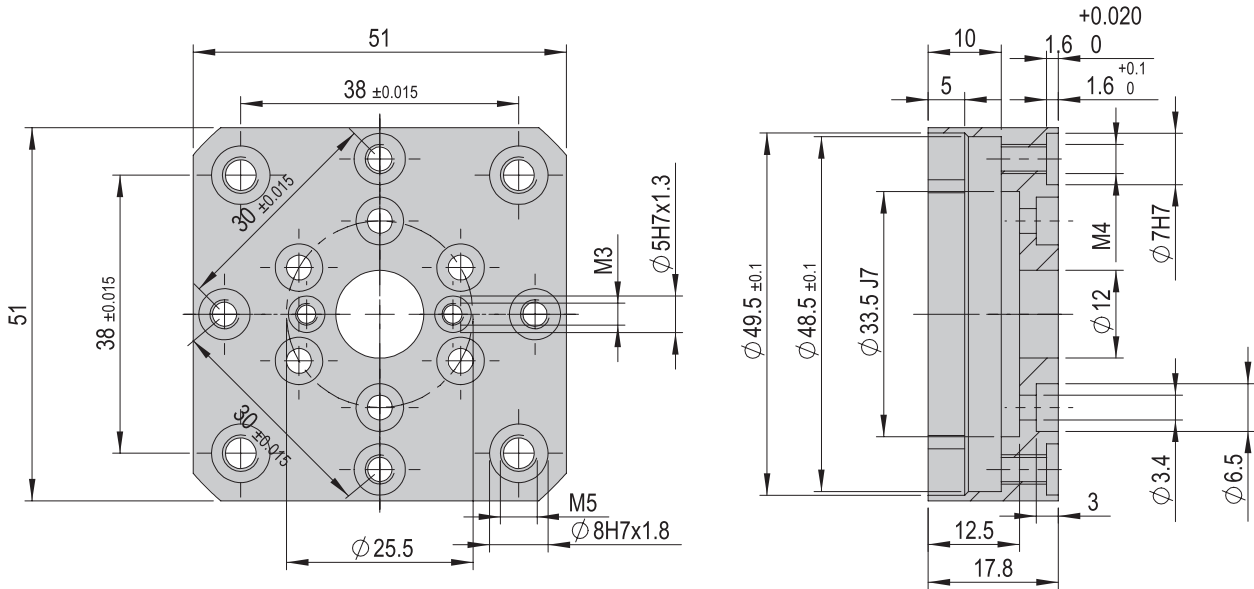
Load diagrams

Rotation time RE-75, 180° - horizontal with SE power



Accessories RE

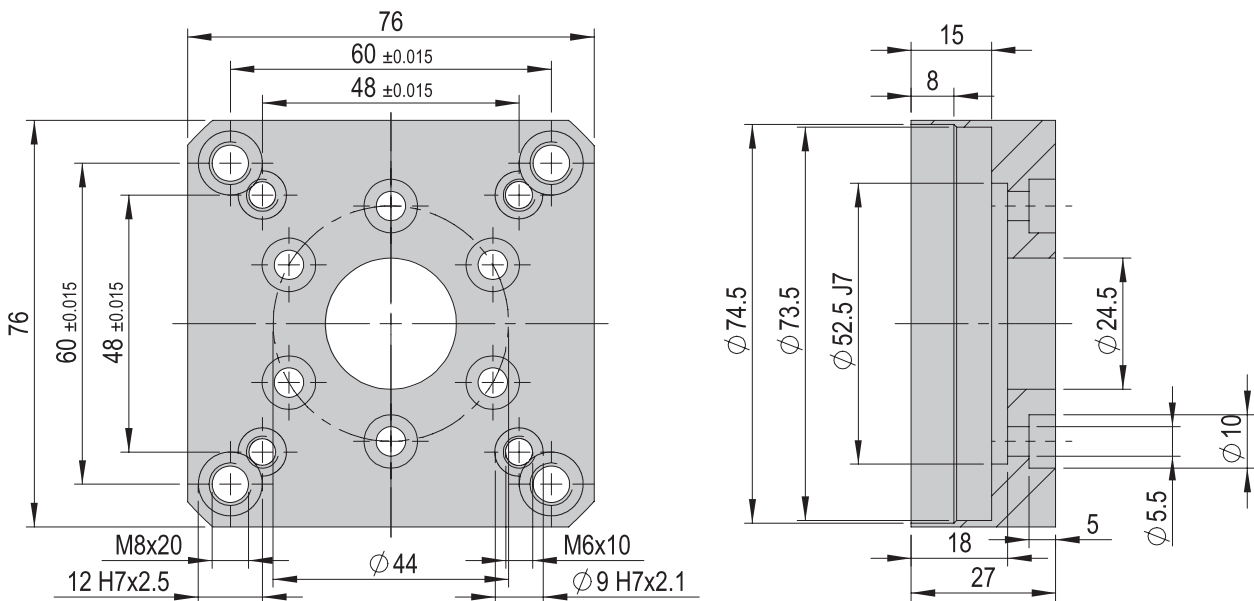
| | |
|------------------------|-----------------|
| Flange plate set RE-50 | RE-50 |
| Order number | 50294008 |
| Net weight | 0.063 kg |



Included in the delivery
(Catalogue HT accessories)

- 6x Mounting screw M3x6

| | |
|------------------------|-----------------|
| Flange plate set RE-75 | RE-75 |
| Order number | 50294009 |
| Net weight | 0.21 kg |



Included in the delivery
(Catalogue HT accessories)

- 6x Mounting screw M5x10

