

Servo gripper SG

SG-50

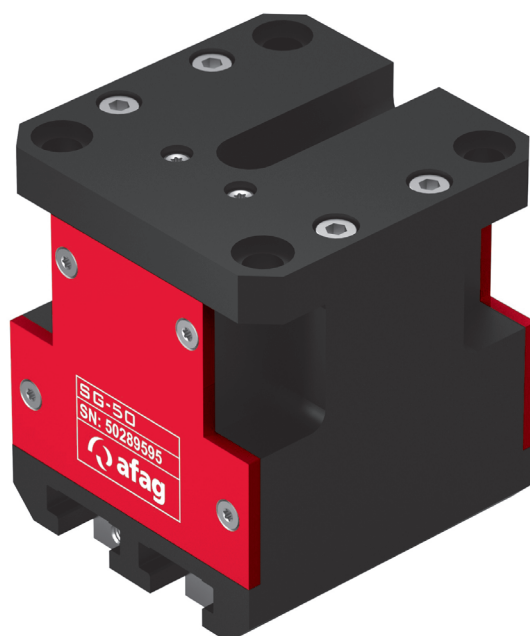


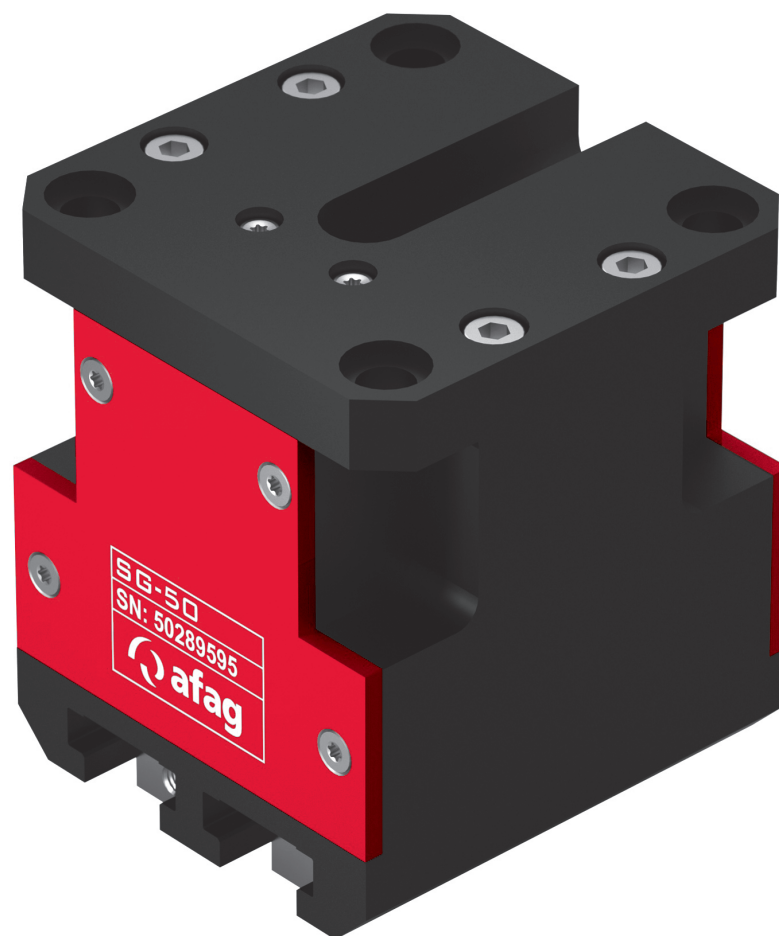
Table of contents: SG

Servo gripper SG	Page
SG-50	272

Servo gripper SG

SG-50

11

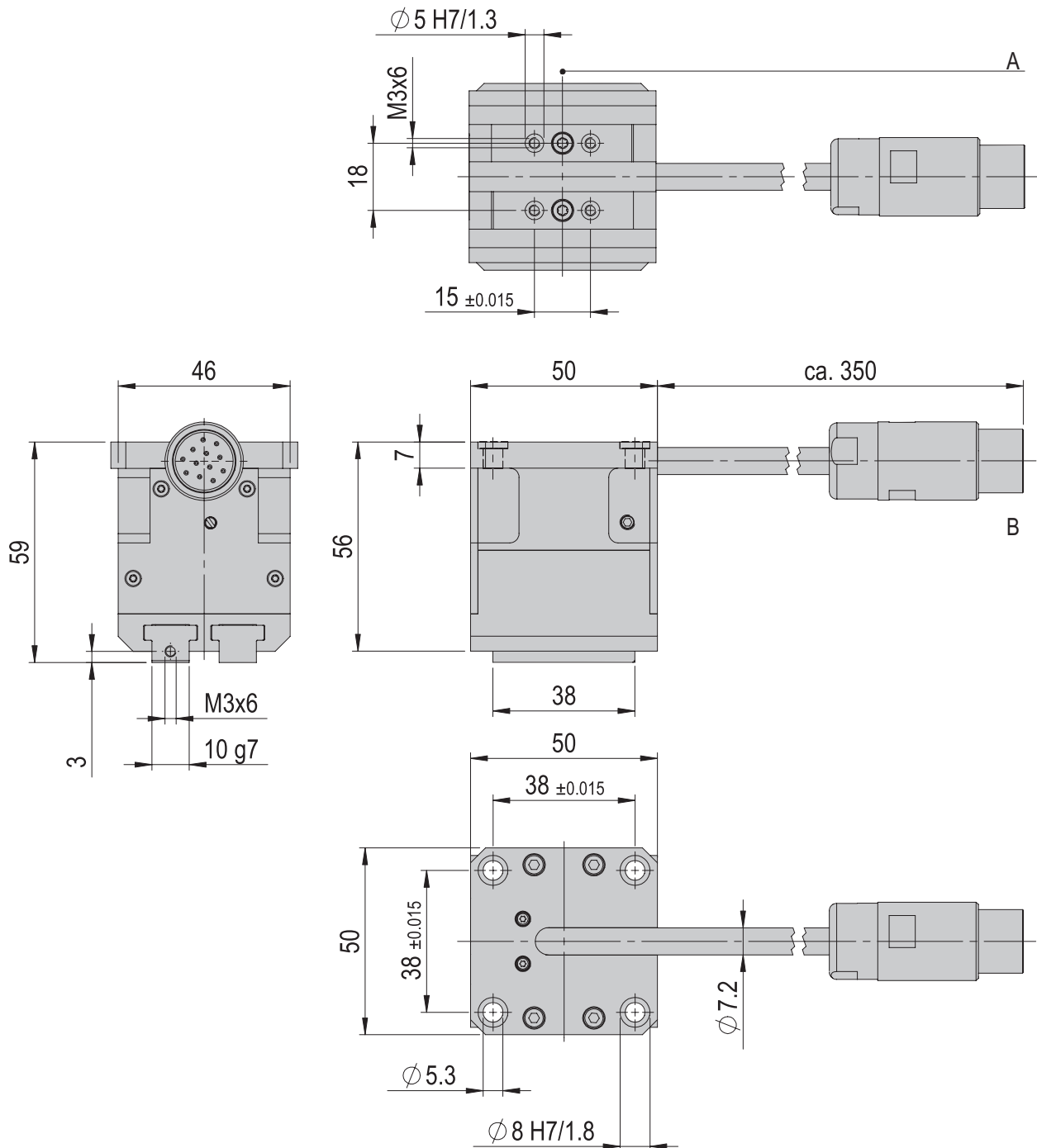


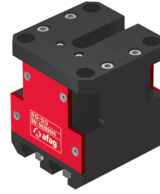
- Integrated measuring system
- Programmable jaw stroke
- Replaces separate testing station

Dimensions and dimension drawings

SG-50

Type	SG-50
A	Jaws in middle position (+/- 5 mm)
B	12-pole industrial plug M17





SG-50	
Attachment grid	38 x 38 mm
Attachment grid alternative	Jaws: 15 mm
Attachment thread	M5
Attachment thread alternative	Jaws: M3
Operating temperature	0- 40 °C
Storage temperature	-20 - 50 °C
Humidity	20 - 80 %

Type	SG-50	SG-50-ABq
Order number	50289595	50460223
Net weight	0.42 kg	0.42 kg
Max. payload	0.5 kg	0.5 kg
Gripping time	2x2 mm: <100 ms	2x2 mm: <100 ms
Gripping force	max. 50 N	max. 50 N
Opening stroke	2 x 10 mm	2 x 10 mm
Noise level	< 65 dB (A)	< 65 dB (A)
Dimensions W x H x D	50 x 50 x 59 mm	50 x 50 x 59 mm
Nominal current	2.4 A	2.4 A
Peak current	3.6 A	3.6 A
Protection type	IP 40	IP 40
Intermediate circuit voltage	24 VDC	24 VDC
Reverse play	< 0.2 mm	< 0.2 mm
Incremental encoder type	Digital A+B	Digital with A/A- ; B/B- and Z/Z- track
Incremental encoder voltage	5 VDC	5 VDC
Number of increments	4096	4096
Reference switch type	NC (normally closed)	NC (normally closed)
Reference switch voltage	24 VDC	24 VDC
Control	SE-24	C11xx
Repeat accuracy	+/- 0.05 mm	+/- 0.05 mm
Handling accuracy	< 0.1 mm	< 0.1 mm
Absolute accuracy	0.1 mm	0.1 mm
Mounting position	✦	✦

The technical data pertains to Afag standard test conditions.
 Note: The electrical data for the operation with alternative servo controllers is available upon request
 Cleanroom class ISO 14644-1, class ISO 7

*The gripping force depends on the selected finger length, the power and the current speed. Observe the gripping force diagrams.

Included in the delivery

- (Catalogue HT accessories)
- 2x Centering bushing Ø8x3.5
 - 8x Mounting screw M5x16

Accessories

- (Catalogue HT accessories)
- SG-50 only: Motor cable-M14
 - SG-50 only: Servocontroller SE-24
 - SG-50 ABq only: Motor cable-M19
 - SG-50 only: Servocontroller C1xx

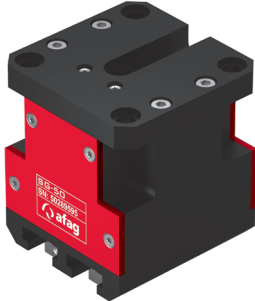
Alternative accessories

- (Catalogue HT accessories)
- Additional motor cables
 - Additional controllers
 - Additional power supplies

Warranty: 24 months following commissioning, but a maximum of 27 months following delivery

←
→

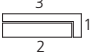
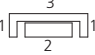
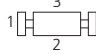
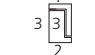
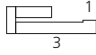

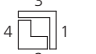
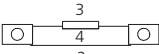
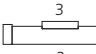
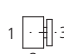
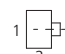
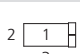
ES20	1	VP 150	2
ES30	1	VP 150	2
SA-1	1,2	VP 150	2
SA-3	1,2	VP 150	2
SA-6	1,2	VP 150	2
OZ-50	1	VP 150	2
PEZ-65	3	VP 150	2
LE-50	1	< direct >	2
RE-50	3	< direct >	2
RE-75	3	VP 150	2*
CS 16	1,3	VP 150	2
CS 20	1,3	VP 150	2
LM 20	1,3	VP 150	2
LM 25	1,3	VP 150	2
PS 16	1,2,3	VP 150	2
PS 25	1,2,3	VP 150	2
HM 10	1	VP 150	2
HM 16	1	VP 150	2
CR 16	3	VP 150	2
CR 20	3	VP 150	2
PMP-c	1,3	VP 150	2



* Offset mounting

↑ ↑

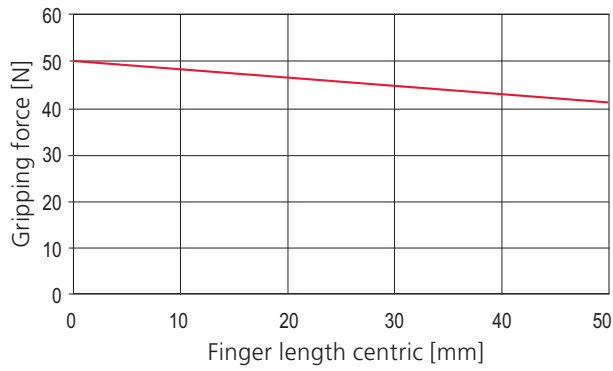
Mounting areas

CS, ES 	PS 	LM, LE 	HM 	SA 	OZ 
PMP, PMP-c 	PEZ, PDZ 	PEL, PDL 	CR, RM 32, RE 	RM, RE 	UG, GM, GE, SG, DG, PG, GM RE 

Note that there might be different mounting positions from one module to another one.
 The required connection elements and the range of support columns are depicted in the catalogue HT accessories.

Gripping force diagrams per jaw

Gripping force depends on finger length



Gripping force depends on power

